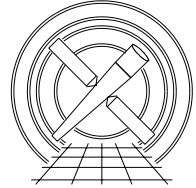




MIT Kavli Institute



Chandra X-Ray Center

## MEMORANDUM

November 3, 2009

**To:** Jonathan McDowell, SDS Group Leader  
**From:** Glenn E. Allen, SDS  
**Subject:** Bias repair  
**Revision:** 3.0  
**URL:** [http://space.mit.edu/CXC/docs/docs.html#bias\\_rep](http://space.mit.edu/CXC/docs/docs.html#bias_rep)  
**File:** `/nfs/cxc/h2/gea/sds/docs/memos/bias_repair_3.0.tex`

## 1 Introduction

Biases can be adversely affected for a number of reasons, including the interaction of charged particles in the detector, the transmission of optical light through the optical-blocking filter (e.g. Fig. 1), and the loss of part or all of the bias telemetry. In order to produce the most accurate ACIS event data possible, biases may have to be repaired or replaced. If a problem affects an entire CCD, then the bias file should be replaced. Otherwise, it may be possible to repair the bias. This spec describes how to use the bias for one observation to replace or repair the bias of another observation.

## 2 Replacement

If an entire bias file has problems, then the bias file should be replaced. The following steps should be performed, in sequence, to replace bias file  $B$  for an observation (e.g. Fig. 1) with a modified version of a bias file  $B'$  from another observation (e.g. Fig. 2).

1. Identify a suitable bias file  $B'$ .<sup>1</sup> The file  $B'$  is suitable if the following conditions are satisfied.
  - a. The bias file  $B'$  is for the same CCD as the bias file  $B$ .
  - b. The parameter-block keywords

BEP\_MODE' = BEP\_MODE, (1)

DEALOAD' = DEALOAD, (2)

DTYCYCLE' = DTYCYCLE, (3)

EXP\_SKIP' = EXP\_SKIP, (4)

EXPTIMEA' = EXPTIMEA, (5)

EXPTIMEB' = EXPTIMEB, (6)

FEPLOAD' = FEPLOAD, (7)

---

<sup>1</sup>Peter Ford's Perl script `search4bias.pl (/nfs/acis/h4/tools/bin/sun4/search4bias.pl on the MIT LAN)` can be used to identify a suitable replacement file.

$$\text{FEP\_MODE}' = \text{FEP\_MODE}, \quad (8)$$

$$\text{NOBADCOL}' = \text{NOBADCOL}, \quad (9)$$

$$\text{NOBADPIX}' = \text{NOBADPIX}, \quad (10)$$

$$\text{OCLKPAIR}' = \text{OCLKPAIR}, \quad (11)$$

$$\text{ORC\_MODE}' = \text{ORC\_MODE}, \quad (12)$$

$$\text{ROWCNT}' = \text{ROWCNT}, \quad (13)$$

$$\text{STARTROW}' = \text{STARTROW}, \text{ and} \quad (14)$$

$$\text{SUM\_2X2}' = \text{SUM\_2X2}. \quad (15)$$

The keywords on the left-hand sides of equations 1–15 are from the parameter-block file (ac-isf\*pbk0.fits) for the same observation as the replacement bias file  $B'$ . The keywords on the right-hand sides of the equations are from the parameter-block file for the same observation as the bias file  $B$  being replaced.

c. The tabulated parameter-block data

$$\text{BIASALG}' = \text{BIASALG}, \quad (16)$$

$$\text{BIASARG0}' = \text{BIASARG0}, \quad (17)$$

$$\text{BIASARG1}' = \text{BIASARG1}, \quad (18)$$

$$\text{BIASARG2}' = \text{BIASARG2}, \quad (19)$$

$$\text{BIASARG3}' = \text{BIASARG3}, \quad (20)$$

$$\text{BIASARG4}' = \text{BIASARG4}, \text{ and} \quad (21)$$

$$\text{VIDRESP}' = \text{VIDRESP} \quad (22)$$

for the CCD associated with  $B$  and  $B'$ . Again, the left- and right-hand sides of equations 16–22 are from the parameter-block files associated with  $B'$  and  $B$ , respectively.

d. The time difference between  $B'$  and  $B$

$$\Delta t \equiv |t' - t| \leq \tau. \quad (23)$$

While small  $\tau$  are best, in some cases the difference may have to be relatively large ( $> 5$  days).

e. The focal-plane temperature difference between  $B'$  and  $B$

$$\Delta T \equiv |T' - T| \leq \Upsilon. \quad (24)$$

Here,  $T'$  and  $T$  are the mean temperatures during the intervals over which the data for the bias files  $B'$  and  $B$ , respectively, were obtained. Again, small  $\Upsilon$  are best ( $< 1$  °C).

2. Copy  $B'$  to  $B''$ , where  $B''$  will become the replacement bias file. The files  $B$  and  $B'$  remain unchanged.
3. For the first node of the bias  $B''$  (i.e. columns 1–256), modify the values of every pixel in the node so that

$$B'' = B' - \text{INITOCLA}' + \text{INITOCLA}, \quad (25)$$

where  $\text{INITOCLA}'$  and  $\text{INITOCLA}$  are keywords in the headers of the bias files  $B'$  and  $B$ , respectively.

4. If the value of  $B' = 4094, 4095, \text{ or } 4096$  for a pixel on the first node, then  $B'' = B'$  for that pixel instead of  $B'' = B' - \text{INITOCLA}' + \text{INITOCLA}$ .
5. If the value of  $B = 4094, 4095, \text{ or } 4096$  for a pixel on the first node, then  $B'' = B$  for that pixel instead of  $B'' = B' - \text{INITOCLA}' + \text{INITOCLA}$ .
6. Repeat steps 3–5 for the other three nodes, using  $\text{INITOCLB}$ ,  $\text{INITOCLC}$ , and  $\text{INITOCLD}$ , instead of  $\text{INITOCLA}$ , for columns 257–512, 513–768, and 769–1024, respectively.

7. Copy the header from  $B'$  to  $B''$ .
8. Update the value of the keyword DATE in  $B''$ .
9. Modify the values of initial-overclock keywords such that

$$\text{INITOCLA}'' = \text{INITOCLA}, \quad (26)$$

$$\text{INITOCLB}'' = \text{INITOCLB}, \quad (27)$$

$$\text{INITOCLC}'' = \text{INITOCLC}, \text{ and} \quad (28)$$

$$\text{INITOCLD}'' = \text{INITOCLD}, \quad (29)$$

where the keywords on the left- and right-hand sides of equations 26–29 are keywords in the headers of the bias files  $B''$  and  $B$ , respectively.

10. Add appropriate history keywords to the header of the modified bias file  $B''$ . For example:
 

```
HISTORY  YYYY-MM-DD:HH:MM:SS
HISTORY  The name and version number of the code used to produce the file
HISTORY  CXC contact person
HISTORY
HISTORY  This bias file was created by replacing the file
HISTORY  acisf????????N???.?_bias0.fits with a modified version of the file
HISTORY  acisf????????N???.?_bias0.fits.
```
11. Update the values of the keywords CHECKSUM and DATASUM in  $B''$ .
12. Reprocess the ACIS event data using the bias file  $B''$ .
13. Examine the pulse-height information of the event data after it has been processed with the replacement bias (e.g. Fig. 3). If DATAMODE = FAINT, then prepare a histogram of the pulse heights of the 4 corner pixels for every event on the first node. If DATAMODE = VFAINT, then prepare a histogram using the pulse heights of the outer 16 pixels instead of the 4 corner pixels. The peak of the distribution should be at a pulse height of 0 adu. If it is not, then add the difference between the location of the peak and 0 adu to every pixel on the node for the bias file  $B''$ .<sup>2</sup> Repeat this process for the other nodes.
14. Repeat steps 12–13 until the condition specified in step 13 is satisfied.

### 3 Repair of full columns

If only a portion of a bias file has problems, then it may be more appropriate to repair the bias instead of replacing it. For example, suppose that every pixel in the columns from  $l$ – $n$  of bias file  $B$  have excess charge for an observation (e.g. Fig. 4). In this case, the following steps should be performed, in sequence, to use data from the bias file  $B'$  of another observation to repair the bias file (e.g. Fig. 5).

1. Identify a suitable bias file  $B'$ .<sup>1</sup> The file  $B'$  is suitable if the conditions described in item 1 of section 2 are satisfied.
2. Copy  $B$  to  $B''$ , where  $B''$  will become the repaired bias file. The files  $B$  and  $B'$  remain unchanged.
3. Suppose that the range of columns from  $l$ – $n$  straddles a node boundary between columns  $m$  and  $m + 1$  (i.e.  $l \leq m < n$ ). For the columns from  $l$ – $m$  of bias  $B''$ , replace the bias values of every pixel  $(i, j)$  of the region such that

$$B''_{ij} = B'_{ij} - M' + M, \quad (30)$$

where the the column number  $i$  (i.e. CHIPX) is in the range from  $l$ – $m$  and the row number  $j$  (i.e. CHIPY) is in the range from 1–1024.  $M'$  is the median of the bias values  $B'_{ij}$  where  $i$  includes all of

---

<sup>2</sup>The value of the keyword INITOCLA'' should not be changed in the same way. Only the data in the bias file  $B''$  is modified in step 13.

the columns on the same node as columns  $l-m$  and  $j$  is in the range from 1–1024. The columns  $i$  from  $l-m$ , the pixels  $(i, j)$  for which  $B'_{ij} = 4094, 4095, \text{ or } 4096$ , and the pixels  $(i, j)$  for which  $B_{ij} = 4094, 4095, \text{ or } 4096$  are excluded from the computation of  $M'$ .  $M$  is computed in the same manner as  $M'$ , except that the bias  $B$  is used instead of  $B'$ . The same set of pixels are used to compute  $M$  and  $M'$ . If the range from  $l-n$  does not straddle a node boundary, then  $m$  should be replaced by  $n$  in the description of the computation of  $M'$  and  $M$ .

4. The process described in step 3 is repeated for the columns from  $m + 1$  to  $n$ . However, if the range from  $l-n$  does not straddle a node boundary, then step 4 is skipped.
5. If the value of  $B'_{ij} = 4094, 4095, \text{ or } 4096$  for a pixel in the region where  $i$  is in the range from  $l-n$  and  $j$  is in the range from 1–1024, then  $B''_{ij} = B'_{ij}$  for that pixel instead of  $B''_{ij} = B'_{ij} - M' + M$ .
6. If the value of  $B_{ij} = 4094, 4095, \text{ or } 4096$  for a pixel in the region where  $i$  is in the range from  $l-n$  and  $j$  is in the range from 1–1024, then  $B''_{ij} = B_{ij}$  for that pixel instead of  $B''_{ij} = B_{ij} - M' + M$ .
7. Copy the header from  $B$  to  $B''$ .
8. Update the value of the keyword DATE in  $B''$ .
9. Add appropriate history keywords to the header of  $B''$ . For example:
 

```
HISTORY  YYYY-MM-DD:HH:MM:SS
HISTORY  The name and version number of the code used to produce the file
HISTORY  CXC contact person
HISTORY
HISTORY  This bias file was created by repairing the file
HISTORY  acisf????????N??_?_bias0.fits with a modified version of the file
HISTORY  acisf????????N??_?_bias0.fits.
```
10. Update the values of the keywords CHECKSUM and DATASUM in  $B''$ .
11. Reprocess the ACIS event data using the bias file  $B''$ .
12. Examine the pulse-height information of the event data after it has been processed with the repaired bias (e.g. Fig. 6). If DATAMODE = FAINT, then prepare a histogram of the pulse heights of the 4 corner pixels for every event in the region that includes the columns from  $l-n$  and the rows from 1–1024. If DATAMODE = VFaint, then prepare a histogram using the pulse heights of the outer 16 pixels instead of the 4 corner pixels. The peak of the distribution should be at a pulse height of 0 adu. If it is not, then add the difference between the location of the peak and 0 adu to every pixel in the repaired region of  $B''$ .
13. Repeat steps 11–12 until the condition specified in step 12 is satisfied.

If a subset of the columns from  $l-n$  includes all of the columns in a node, then follow the process described in section 2 for that subset (including the change to the keyword INITOCL $x''$ , where  $x = A, B, C, \text{ or } D$ ). For the remaining columns, use the process described in section 3. If the file  $B$  is for an observation that used one of the standard subarrays or some other user-specified subset of the rows of a CCD, then the appropriate range of  $j$  is not 1–1024.

## 4 Caveats

1. If the portion of a bias being modified has excess charge, then events in that region whose pulse heights are near the event threshold may have been lost and cannot be recovered.
2. The algorithms described in this spec were designed for timed-exposure mode observations and may not be appropriate for continuous-clocking mode observations.

## 5 TBD

1. The algorithms described in this spec do not address systematic offsets at the sub-adu level.

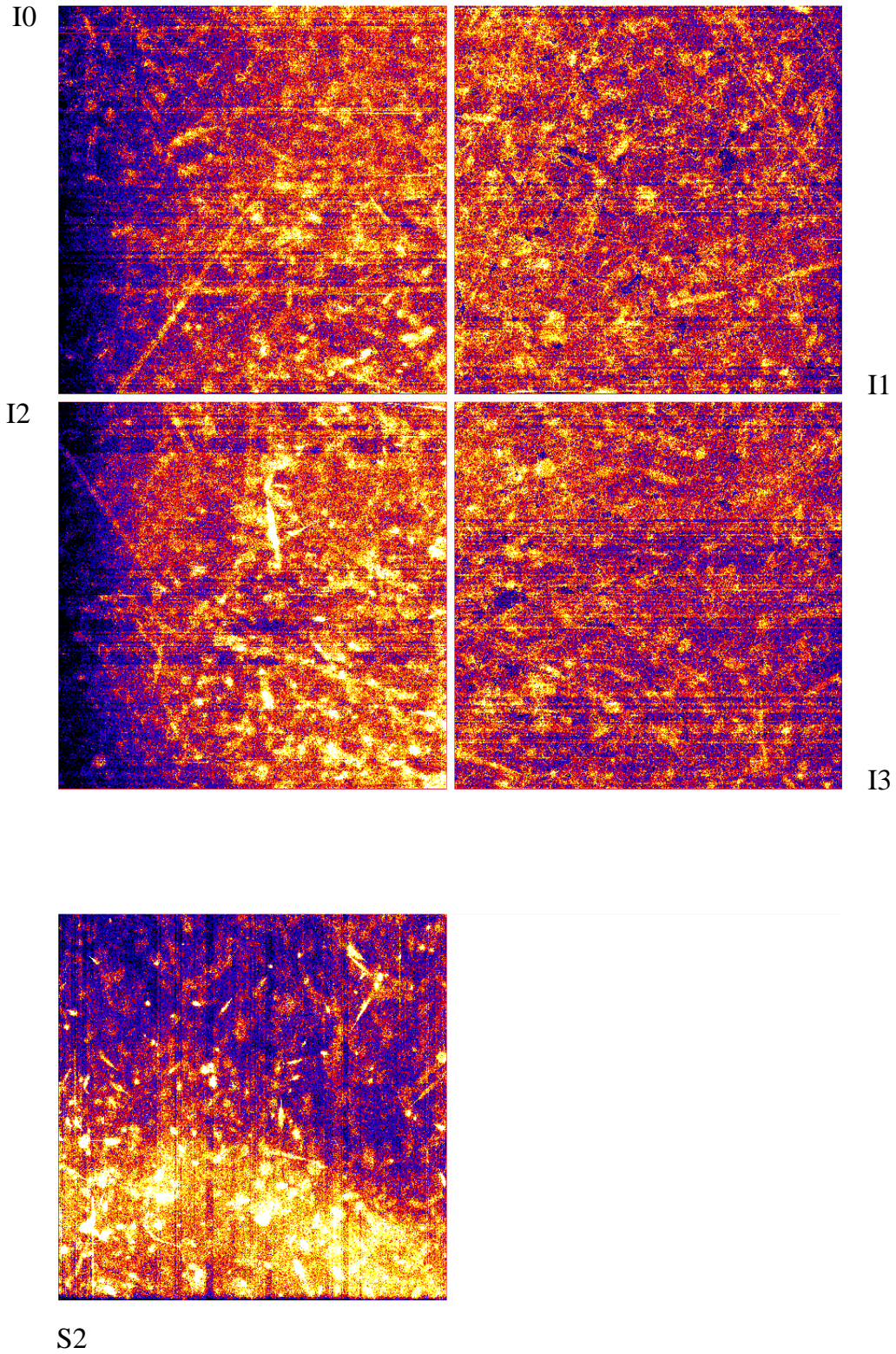


Figure 1: An image of the bias residuals for the five CCDs used for OBS\_ID 11799. The median of each column has been subtracted from the bias values for the column. Excess charge from an optical light leak is evident, particularly on ACIS-S2, -I2, and -I0. The labels for each CCD are located near the coordinates (CHIPX, CHIPY) = (1, 1).



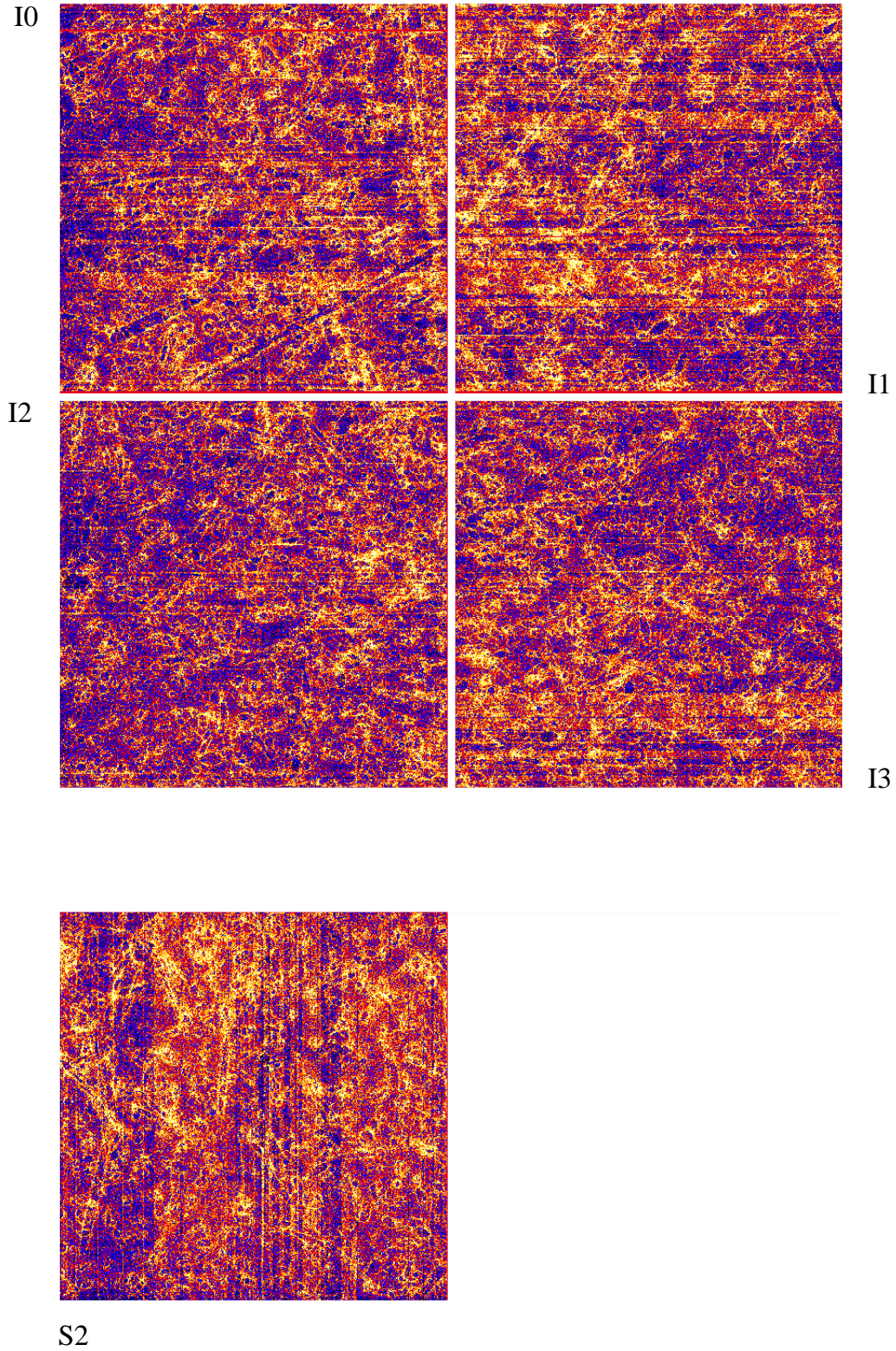


Figure 2: An image of the bias residuals for the five CCDs used for OBS\_ID 11799 after the bias files were replaced with modified versions of the bias files for OBS\_ID 9345. The median of each column has been subtracted from the bias values for the column. The labels for each CCD are located near the coordinates (CHIPX, CHIPY) = (1, 1).

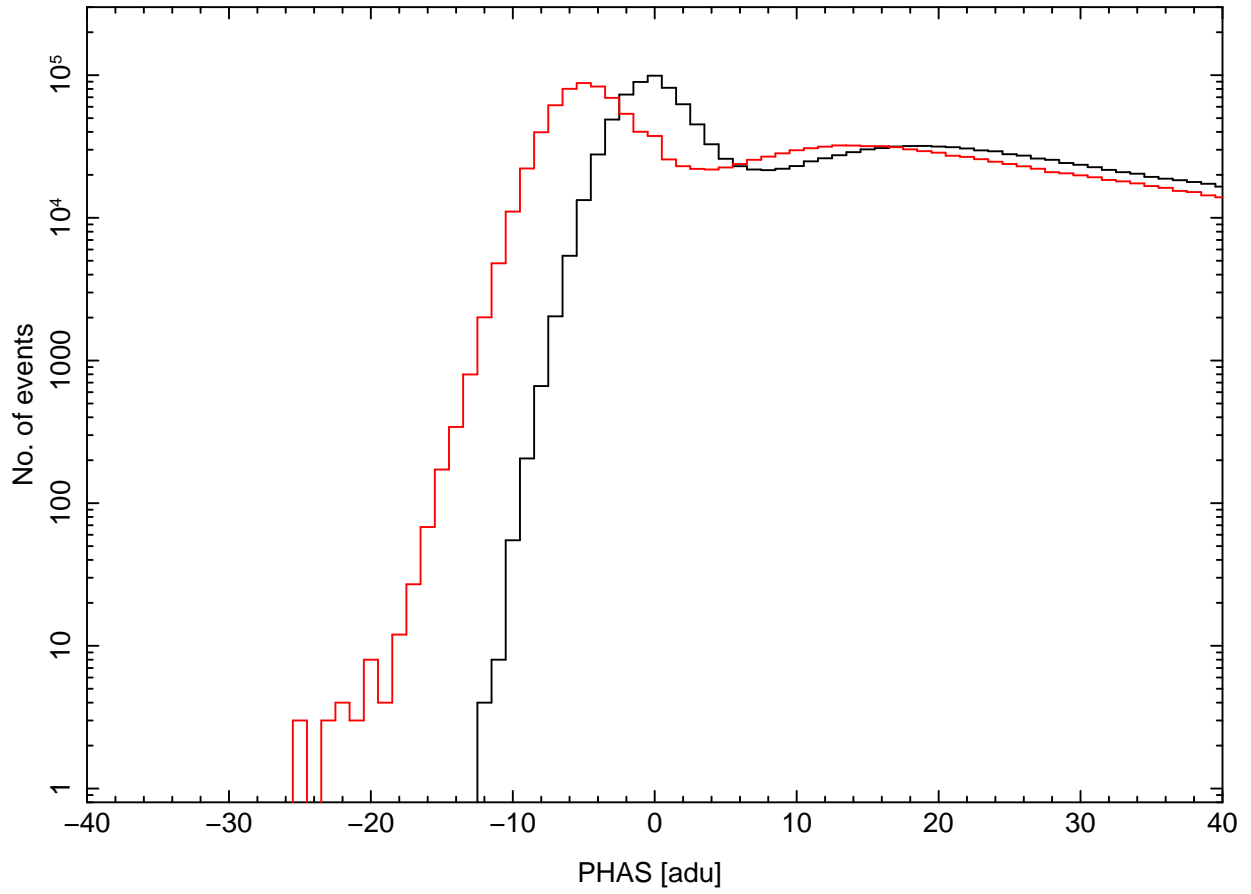


Figure 3: Histograms of the pulse heights of the outer 16 pixels of the  $5 \text{ pixel} \times 5 \text{ pixel}$  event islands for OBS\_ID 11799. Only events on the first node of ACIS-I2 are included. The red histogram is the distribution obtained using the data processed with the biases shown in Figure 1. The peak of the red histogram is at  $-5 \text{ adu}$ , instead of zero. The black histogram is the distribution obtained after the data were reprocessed using the biases shown in Figure 2. The peak of the black histogram is at  $0 \text{ adu}$ , as desired.



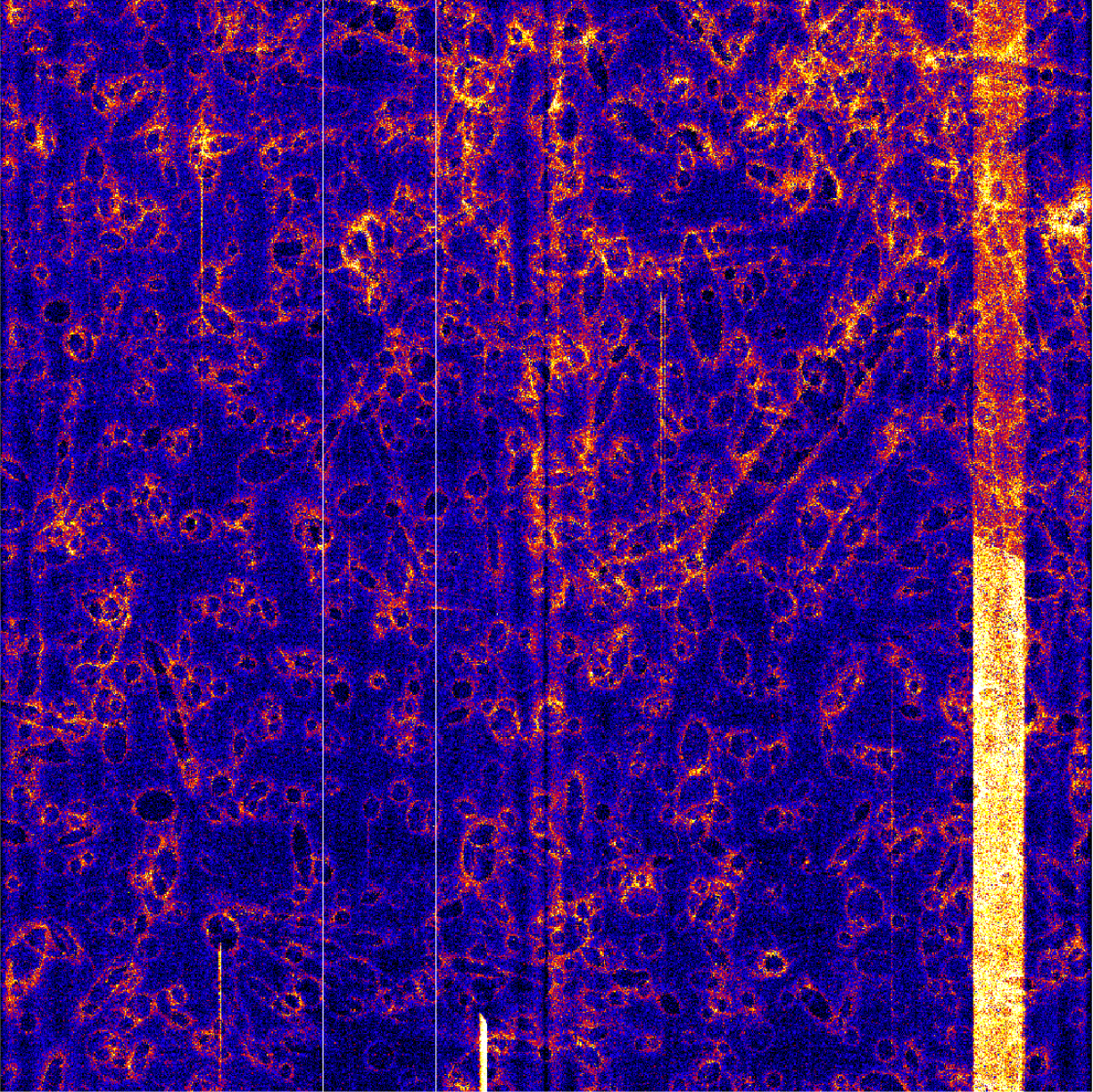


Figure 4: An image of the ACIS-I1 bias residuals for OBS\_ID 9336. The median of each node has been subtracted from the bias values for the node. Excess charge is evident in the columns from 913–961.



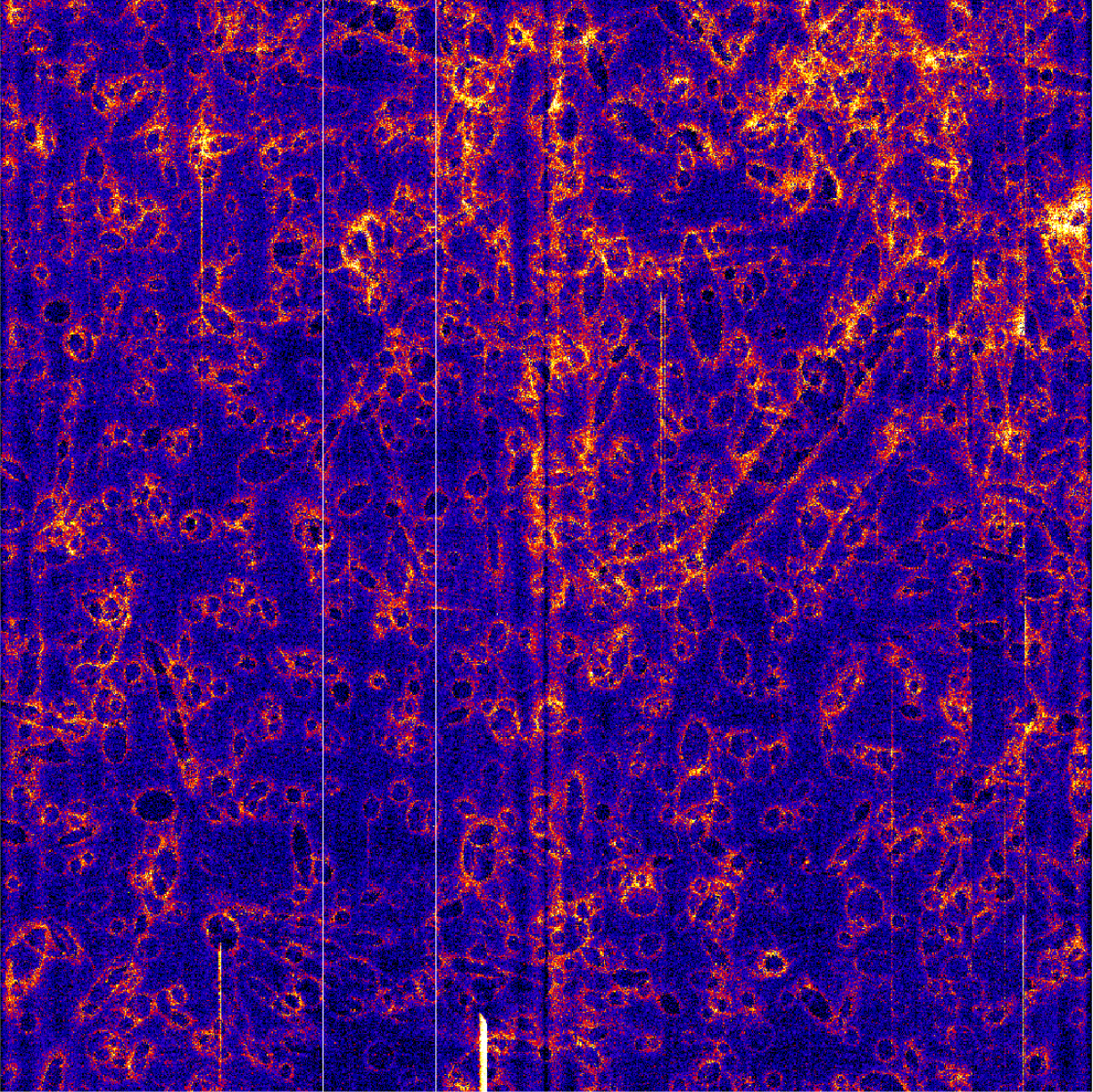


Figure 5: An image of the ACIS-II bias residuals for OBS\_ID 9336 after the data in the columns from 913–961 were repaired using data from a bias file for OBS\_ID 10811. The median of each node has been subtracted from the bias values for the node.

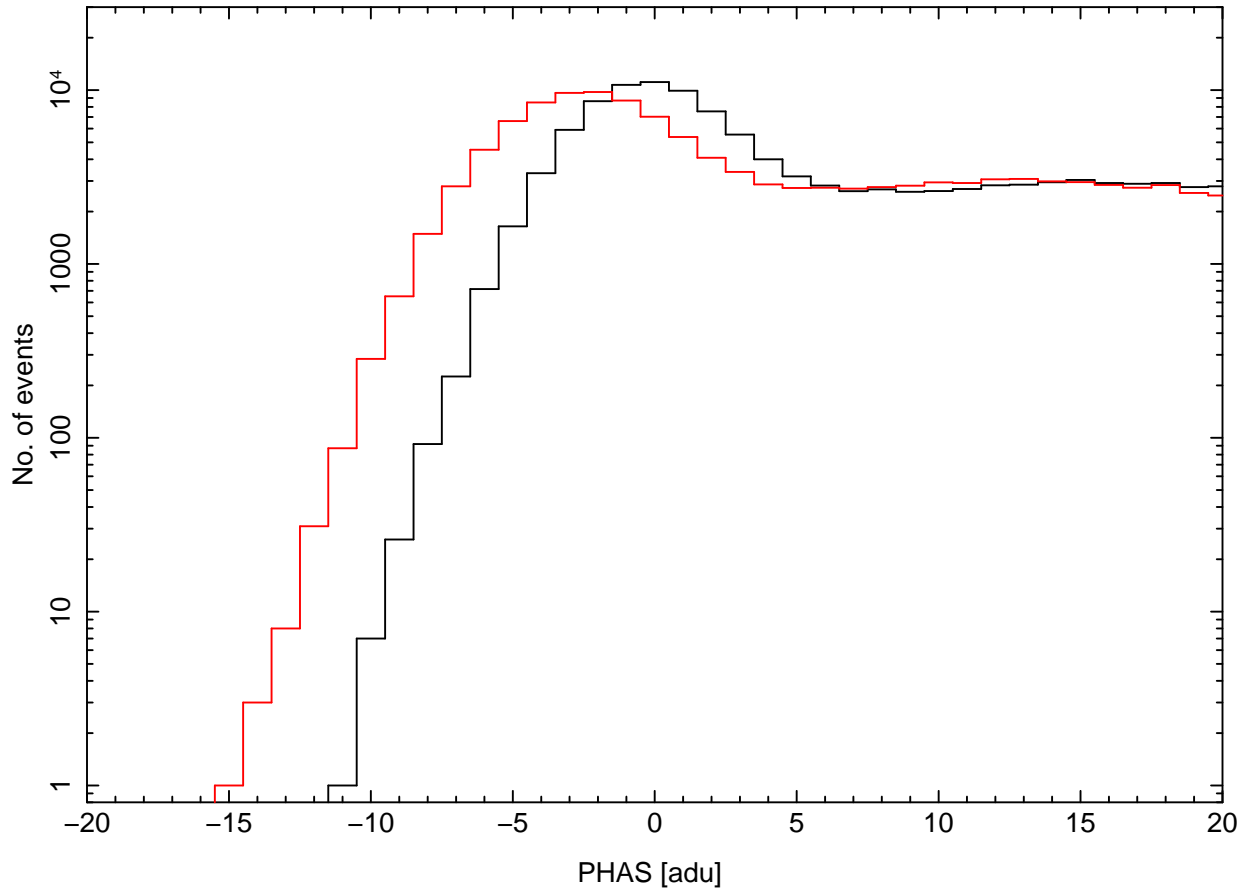


Figure 6: Histograms of the pulse heights of the outer 16 pixels of the  $5 \text{ pixel} \times 5 \text{ pixel}$  event islands for OBS\_ID 9336. Only events in the columns from 913–961 of ACIS-I1 are included. The red histogram is the distribution obtained using the data processed with the bias shown in Figure 4. The peak of the red histogram is at  $-2 \text{ adu}$ , instead of zero. The black histogram is the distribution obtained using the bias shown in Figure 5. The peak of the black histogram is at  $0 \text{ adu}$ , as desired.