

₁ Evidence for a Compact Object in the Aftermath of the
₂ Extra-Galactic Transient AT2018cow

3 Dheeraj R. Pasham^{1*}, Wynn C. G. Ho², William Alston³, Ronald Remillard¹,
Mason Ng¹, Keith Gendreau⁴, Brian D. Metzger⁵, Diego Altamirano⁶,
Deepto Chakrabarty¹, Andrew Fabian⁷, Jon Miller⁸, Peter Bult^{4,9},
Zaven Arzoumanian⁴, James F. Steiner¹⁰ Tod Strohmayer⁴,
Francesco Tombesi^{4,9,11,12}, Jeroen Homan¹³, Edward M. Cackett¹⁴, Alice Harding¹⁵

¹Kavli Institute for Astrophysics and Space Research, Massachusetts Institute of Technology,
Cambridge, MA 02139, USA

²Department of Physics and Astronomy, Haverford College, 370 Lancaster Avenue,
Haverford, PA 19041, USA

³European Space Agency (ESA), European Space Astronomy Centre (ESAC),
Villanueva de la Cañada, Madrid, E-28691, Spain

⁴NASA Goddard Space Flight Center, Greenbelt, MD, USA

⁵Columbia Astrophysics Laboratory, Columbia University, New York, NY 10027, USA

⁶Department of Physics and astronomy, University of Southampton,
University Road, Southampton, SO17 1BJ, UK

⁷Institute of Astronomy, University of Cambridge, UK

⁸Department of Astronomy, 311 West Hall, 1085 South University Ave.,
Ann Arbor, MI 48109-1107

⁹Department of astronomy, University of Maryland College Park, MD, 20742

¹⁰Center for Astrophysics, Harvard & Smithsonian, Cambridge, MA, 02138

¹¹Department of Physics, Tor Vergata University of Rome, Via della Ricerca Scientifica 1,
00133 Rome, Italy

¹²INAF – Astronomical Observatory of Rome, Via Frascati 33, 00040 Monte Porzio Catone, Italy

¹³Eureka Scientific, Inc., Oakland, CA 94602, USA

¹⁴Department of Physics and Astronomy, Wayne State University, 666 W Hancock,
Detroit, MI 48201

¹⁵Theoretical Division, Los Alamos National Laboratory, Los Alamos, NM 87545

*To whom correspondence should be addressed; E-mail: dheeraj@space.mit.edu

4 **The brightest Fast Blue Optical Transients (FBOTs) are mysterious extra-**
5 **galactic explosions that may represent a new class of astrophysical phenom-**

6 **ena (*I*). Their fast time to maximum brightness of less than a week and decline**
7 **over several months and atypical optical spectra and evolution are difficult to**
8 **explain within the context of core-collapse of massive stars which are powered**
9 **by radioactive decay of Nickel-56 and evolve more slowly (2, 3). AT2018cow**
10 **(at redshift of 0.014) is an extreme FBOT in terms of rapid evolution and**
11 **high luminosities (4–7). Here we present evidence for a high-amplitude quasi-**
12 **periodic oscillation (QPO) of AT2018cow’s soft X-rays with a frequency of**
13 **224 Hz (at 3.7σ significance level or false alarm probability of 0.02%) and**
14 **fractional root-mean-squared amplitude of $>30\%$. This signal is found in the**
15 **average power density spectrum taken over the entire 60-day outburst and**
16 **suggests a highly persistent signal that lasts for a billion cycles. The high fre-**
17 **quency (rapid timescale) of 224 Hz (4.4 ms) argues for a compact object in**
18 **AT2018cow, which can be a neutron star or black hole with a mass less than**
19 **850 solar masses. If the QPO is the spin period of a neutron star, we can set**
20 **limits on the star’s magnetic field strength. Our work highlights a new way of**
21 **using high time-resolution X-ray observations to study FBOTs.**

22 High-cadence sky surveys that can scan the same portions of the sky multiple times per
23 night have uncovered fast-evolving optical transients (2, 3, 8). These “fast” transients rise to
24 their peak brightness within $\lesssim 10$ days and fade away within a month or two (e.g., (2)). They
25 are spatially coincident with external galaxies but are offset from their nuclei (e.g., (2, 9)).
26 Their optical spectra are often blue with occasional presence of Hydrogen and Helium features.
27 The peak luminosities of FBOTs range from the faint end of core-collapse supernovae to the
28 bright end of superluminous supernovae (see Fig. 1 of (*I*) and Fig. 1 of (*10*)). A recent
29 study (*10*) has shown that the majority of FBOTs are extreme cases of core-collapse supernovae.
30 However, a subset of high luminosity FBOTs with peak bolometric luminosities $\sim 10^{44}$ erg s⁻¹

31 cannot be explained as an extension of properties of core-collapse supernovae (11–13). Thus,
32 several alternate mechanisms mentioned above have been proposed to explain the properties
33 of luminous FBOTs. These include emission from the interaction of the supernova shockwave
34 with a dense circumstellar medium (5, 14, 15), injection of energy from spin down of a young
35 magnetar formed either in a core-collapse supernova or a binary neutron star merger (16, 17),
36 accretion onto a newly formed compact object in a failed supernova (5), mergers of binary white
37 dwarfs (18), and intermediate-mass black holes (IMBHs: a few $\times 10^{4-5} M_{\odot}$) tidally disrupting
38 stars (7, 19).

39 Prior to June 2018, the majority of FBOTs were first identified in archival images (e.g.,
40 (2, 9, 20, 21)). AT2018cow, discovered by the ATLAS sky survey (22) in a galaxy at a distance
41 of ≈ 60 Mpc (6), was discovered in real time. Its brightness rise of more than 5.7 magnitudes
42 in just 4 days (see Fig. 1 of (6)) was remarkable and its peak bolometric luminosity of 4×10^{44}
43 erg s^{-1} makes it the brightest FBOT known so far (1). As the discovery was promptly reported
44 (23), the source received a significant amount of multi-wavelength coverage. Radio, millimeter,
45 optical, UV, X-ray and gamma ray properties of the source are described in various papers
46 (4–7, 19, 24, 25). However, in spite of exquisite coverage the physical origin of AT2018cow
47 remains elusive.

48 Given its high X-ray luminosity (peak value of a roughly 10^{43} erg/s, (5)) and variability on
49 timescales of a few tens of hours (5, 24), compact object (accretion) powered scenarios have
50 been proposed for AT2018cow. These suggestions include emission from tidal disruption of
51 a star by an intermediate-mass black hole with mass in the range of $10^{4-6} M_{\odot}$ (7), fallback
52 accretion in a failed supernova (5, 26), and energy injection by a newly born neutron star in a
53 supernova (27).

54 Several works over the last few decades (28) have found that when accreting compact ob-
55 ject (stellar-mass black hole/neutron star) X-ray binaries go into outbursts—due to enhanced

56 accretion—they sometimes exhibit high-frequency (a few \times (10-100) Hz) quasi-periodic variabil-
57 ity in their X-ray brightness. There is no clear consensus on the exact mechanisms that pro-
58 duce these so-called High-Frequency Quasi-Periodic Oscillations (HFQPOs) but it is generally
59 agreed upon that they originate from a region close to the compact object where the dynamics
60 of motion are dictated by the compact object’s strong gravitational field (see (28) and references
61 therein), and they represent a direct evidence for the presence of a compact object. Some active
62 galactic nuclei have also shown evidence for QPOs which have been argued to be analogous to
63 HFQPOs of stellar-mass black holes (29–31). More recently, HFQPO analogs (frequencies of
64 a few mHz) have also been found in stellar tidal disruption events involving $\sim 10^6 M_{\odot}$ black
65 holes (32–34) suggesting that, perhaps, such QPOs are universal among all compact object
66 systems that undergo extreme changes in accretion.

67 To test these hypotheses for a compact object (accretion) powered scenario, we studied
68 AT2018cow’s X-ray (0.25-2.5 keV) variability using an average power density spectrum de-
69 rived from the entire monitoring data taken by the Neutron Star Interior Composition Explorer
70 (*NICER*) on board the International Space Station. We find evidence for an X-ray QPO in the
71 average PDS (left panel of Fig. 1). The QPO signal has a centroid frequency, full width half
72 maximum (FWHM) and a fractional root-mean-squared amplitude of 224.4 ± 1.0 Hz, < 16 Hz,
73 and $30 \pm 3\%$, respectively. Using a rigorous Monte Carlo approach (see supplementary material,
74 SM) that takes into account the nature of the underlying noise continuum and the search trials,
75 we find the global false alarm probability of this signal to be $\approx 2 \times 10^{-4}$ (or 3.7σ equivalent for
76 a normal distribution; see right panel of Fig. 1 and SM).

77 We rule out various instrumental and particle backgrounds as the origin for this QPO signal
78 (See SM). Based on the long term light curves derived from *NICER* and Neil Gehrels *Swift*
79 X-ray telescope, which has imaging capability (see top panel of Fig. 2), and late time *XMM-*
80 *Newton* X-ray images of AT2018cow’s field of view (FoV), we also rule out a contaminating

81 source as the origin of this QPO (see Fig. 3). Furthermore, over the last three years of *NICER*
82 operations a signal of similar nature has never been found in any of the several dozens of other
83 targets (see, for example, Fig. S10). Based on these tests, we conclude that the signal is
84 consistent with originating from AT2018cow.

85 After establishing that the signal is statistically significant and ruling out an instrumental and
86 a background origin, we extracted the QPO’s signal-to-noise as a function of the accumulated
87 exposure (See Fig. S9 and supplementary movie S1). It is evident that the QPO’s strength
88 increases gradually with increasing exposure. This suggests that the signal is persistent and
89 present at some level throughout the ~ 2 month monitoring period. Taken at face value, this
90 suggests that it is stable over ~ 60 days/ 4.44 ms $\gtrsim 10^9$ cycles. Interestingly, the mean slope of
91 the curve in Fig. S9 also steepens around the same time (near day 17) when high-amplitude
92 X-ray flares start to appear on days timescale (see the blue diamonds in the upper panel of Fig.
93 2). Moreover, the fractional rms of the QPO jumps around day 17 which also coincides with
94 the time when the optical spectrum of AT2018cow underwent dramatic changes (see (5) for
95 details). We separated the total exposure into two epochs, before and after day 17. We extract
96 an average PDS from each of these two time intervals and the QPO is fit with a Lorentzian. The
97 QPO’s fractional rms amplitude appears to be higher at later times (see bottom panel of Fig. 2).

98 The frequency of this QPO alone can set stringent constraints on the underlying physical
99 mechanism producing X-rays in AT2018cow. The causality argument suggests that the physical
100 size of an object producing this signal cannot be larger than the light crossing size, i.e., speed
101 of light $\times (1/224$ s) $\approx 1.3 \times 10^8$ cm. This small size points us naturally towards a compact
102 object. Emission from shock interactions (5, 14) is disfavored because CSM–shock interactions
103 are not known to ”pulse”. If the compact object is a black hole then assuming the emission
104 originates from the innermost stable circular orbit allows us to set an upper limit on the black
105 hole mass. These limits are $95 M_{\odot}$ and $850 M_{\odot}$ for a maximally prograde spinning (spin has

106 the same direction as the material falling in) and a retrograde (vice versa) spinning black hole,
107 respectively. A larger emission radius (in units of gravitational radii) would require the object
108 to be even more compact. This rules out a heavy IMBH ($\gtrsim 850 M_{\odot}$) in AT2018cow (19).

109 HFQPOs with frequencies in the hundreds of Hz range have been seen in a handful of
110 stellar-mass black holes with known dynamical mass estimates (28). They often appear in
111 pairs with frequency ratio of 2:3 (28). In these systems it appears that the black hole mass
112 scales inversely with the HFQPO frequency (see, for example, Fig. 4.17 of (28)). While the
113 frequency and width of AT2018cow's QPO are similar to HFQPOs of stellar-mass black holes,
114 the observed fractional rms amplitude is high (25-45% compared to a few percent in stellar-
115 mass black holes (28)), and a harmonic is not apparent here (see sec. 3 and Table S2 for upper
116 limits). Furthermore, the QPO's energy dependence is also uncertain given our narrow X-ray
117 band pass of 0.25-2.5 keV. Also, the absence of any red noise (even at lower frequencies, i.e., a
118 few \times mHz; see Fig. S4) is unlike accreting X-ray binaries. All the stellar-mass X-ray binaries
119 with HFQPOs are relatively highly inclined (28). Given AT2018cow's high (a few $\times 10^{42}$ erg/s)
120 average X-ray luminosity beaming, which can boost the apparent brightness, is likely present,
121 and this points towards a low inclination for this system. Thus, given all these factors, it is
122 unclear if a direct comparison can be made with HFQPOs of stellar-mass black hole binaries.
123 Nevertheless, if we assume the same scaling law applies and that 224 Hz is the fundamental
124 harmonic, then the implied black hole mass in AT2018cow is $\sim 4 M_{\odot}$.

125 Alternatively, the compact object could be a neutron star with the QPO representing either
126 its spin rate of 224 Hz or an analog of the upper kHz QPOs which can have high fractional rms
127 amplitudes (see Fig. 2 of (35)). We explore multiple physical scenarios for the former case.
128 First, we consider the case where AT2018cow's luminosity is driven by the spin down of an
129 isolated millisecond magnetar. In this case, the high and changing bolometric luminosity would
130 require high magnetic field strength which in turn would lead to a rapid change in the spin

131 frequency. This is inconsistent with the QPO's stability based on its width ($< 16 \text{ Hz}/60 \text{ d} =$
132 $3 \times 10^{-6} \text{ Hz s}^{-1}$). This inconsistency rules out an isolated magnetar powered scenario. Then
133 we consider a case in which the luminosity is powered by accretion of matter onto the magnetic
134 poles of a neutron star. While this model provides a possible mechanism to induce periodicity in
135 the light curve and a declining luminosity, its prediction for spin period evolution is inconsistent
136 with the QPO's stability (see SM for more details). Lastly, if this QPO is due to a process
137 similar to that operating in magnetar QPOs, the physics and damping mechanisms would be in
138 an entirely different regime given that the stability of AT2018cow's QPO is significantly ($\gtrsim 10^5$)
139 longer than those of magnetar burst QPOs (36).

140 Within the bounds of a central engine being either a neutron star, stellar-mass black hole or a
141 few hundred M_{\odot} black hole, the QPO presented here can be produced under different scenarios.
142 For example, it has been proposed that a flare like AT2018cow could arise from young star
143 clusters containing a stellar-mass black hole (mass $\sim 10 M_{\odot}$) tidally disrupting a main sequence
144 star within the cluster (37) or from fallback accretion of material in a failed supernova whose
145 core collapses into either a neutron star or a stellar-mass black hole (7). In all these scenarios,
146 such a QPO signal could be envisioned. Using the Atacama Large Millimeter/submillimeter
147 Array (ALMA) (25) spatially resolved the molecular gas content and star formation rate within
148 AT2018cow's host galaxy. They find that AT2018cow is situated between a peak in molecular
149 gas content and a blue star cluster. The presence of these regions indicate active star formation
150 around AT2018cow and favors an association with deaths of massive stars for AT2018cow. The
151 implications of this QPO for AT2018cow's existing models are summarized in Table 1.

152 In summary, we present evidence for a 224 Hz X-ray QPO persistent for one billion cycles
153 from AT2018cow statistically significant at the 3.7σ level. Previous works (5) have suggested
154 a compact object in AT2018cow based on X-ray variability on a few tens of hours timescale
155 and also its X-ray spectral resemblance to some accreting systems. The detection of regular

156 variations on millisecond timescale presented here provides the most direct way to infer the
157 presence of a compact object, although it still remains unclear whether that compact object is a
158 stellar-mass black hole or a neutron star. If AT2018cow originated from the death of a massive
159 star, our findings represent the birth of a compact object in a supernova. Similar signals in
160 future FBOTs could allow astronomers to study infant compact objects immediately after birth.
161 Assuming all luminous FBOTs are AT2018cow-like which have an estimated volumetric rate
162 of $<10^{-7} \text{ yr}^{-1} \text{ Mpc}^{-3}$ (10, 12, 38, 39), *NICER* can, in principle, find and study QPOs from one
163 such system every 3 years (see SM sec. 6).

Table 1: Models for AT2018cow’s X-ray emission and their validity against the 224 Hz QPO reported here. This table can be considered as a modified extension of Table 2 of (5).

Model/class of models	References*	Consistent with QPO?	Notes
Shock interactions with circumstellar medium (CSM)	(4, 14)	No	CSM interaction could explain emission at other (non X-ray) wavelengths, i.e., optical and radio but inconsistent with rapid X-ray variability
An embedded internal shock formed from interaction with dense CSM	(5)	No	A compact embedded internal shock is, in principle, consistent with the size constraint provided by the 224 Hz QPO. However, all X-ray QPOs known thus far in literature are from compact objects. So an internal shock model is disfavored.
Accreting intermediate-mass black hole ($\gtrsim 10^3 M_\odot$)	(7, 19, 40)	No	Based on causality argument the compact object producing the QPO has to be less than $850 M_\odot$ (see main text)
Neutron star (formed from merging white dwarfs/Supernova)	(6, 18)	Yes	Constraints on magnetic field if the 224 Hz QPO represents the spin period. However, the persistence of the signal in a narrow frequency range is challenging to explain (see SM)
Stellar-mass black hole (accreting from outer layers of a failed supernova/tidally disrupting a star)	(7, 37, 41, 42)	Yes	The QPO frequency is similar to those often seen in known stellar-mass black holes but the X-ray luminosity, rms, and QPO’s stability are unlike any known stellar-mass black hole systems (see main text)

*Not an exhaustive list. Also see references therein.

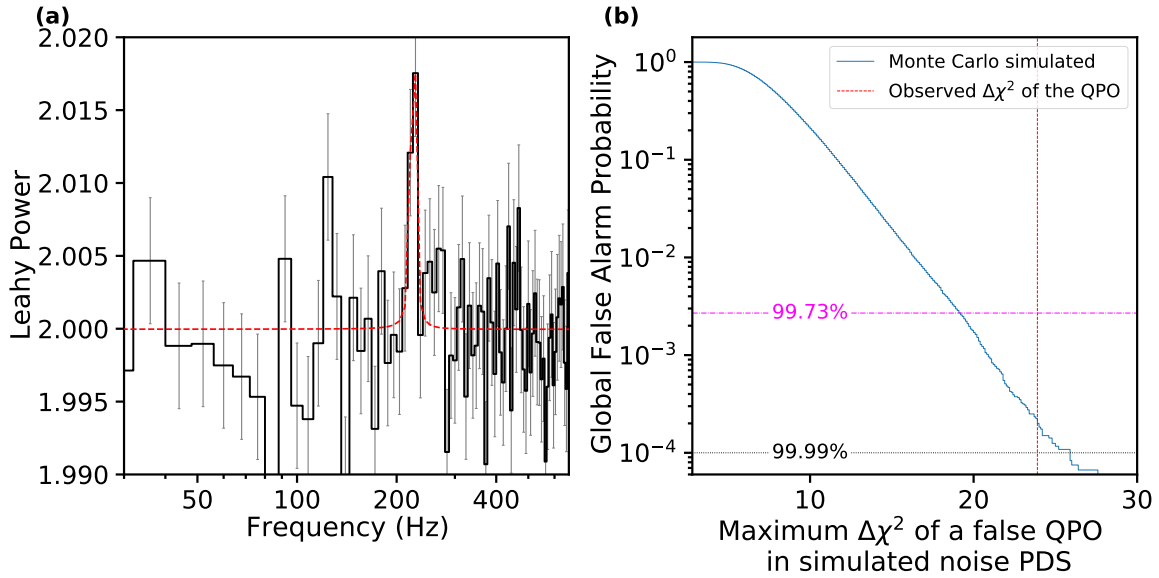


Figure 1: **(a) Average X-ray PDS of AT2018cow showing evidence for a quasi-periodicity near 224 Hz.** This PDS was computed by averaging 105 256-second soft X-ray (0.25-2.5 keV) light curves sampled at 1/2048 s. The resulting PDS was further re-binned by a factor of 2048 which gives a frequency resolution of 8 Hz. The strongest excess above the Poisson noise level of 2 is around 224 Hz. The power values in the rest of the PDS continuum are consistent with white noise (see SM sections 2.2.2 and 2.2 and Figures S3, S2, S4). The PDS is normalized such that the mean value surrounding 224 Hz is equal to the Poisson value of 2. The best-fit constant + Lorentzian models are indicated by the dashed red curve. **(b) Estimates for the statistical significance of the 224 Hz QPO.** The likelihood of finding a QPO from noise fluctuations, **i.e., false alarm probability = 1-CDF**, (y-axis) vs the maximum improvement in χ^2 by fitting the simulated noise PDS with a constant+Lorentzian over modeling it with a constant at every frequency searched during the identification of the signal on the left (see section 2.2.5 and Fig. S5 for more details). **The global false alarm probability of finding a QPO as strong as the one observed is $\approx 2 \times 10^{-4}$ (1 in 5000; $\approx 3.7\sigma$).**

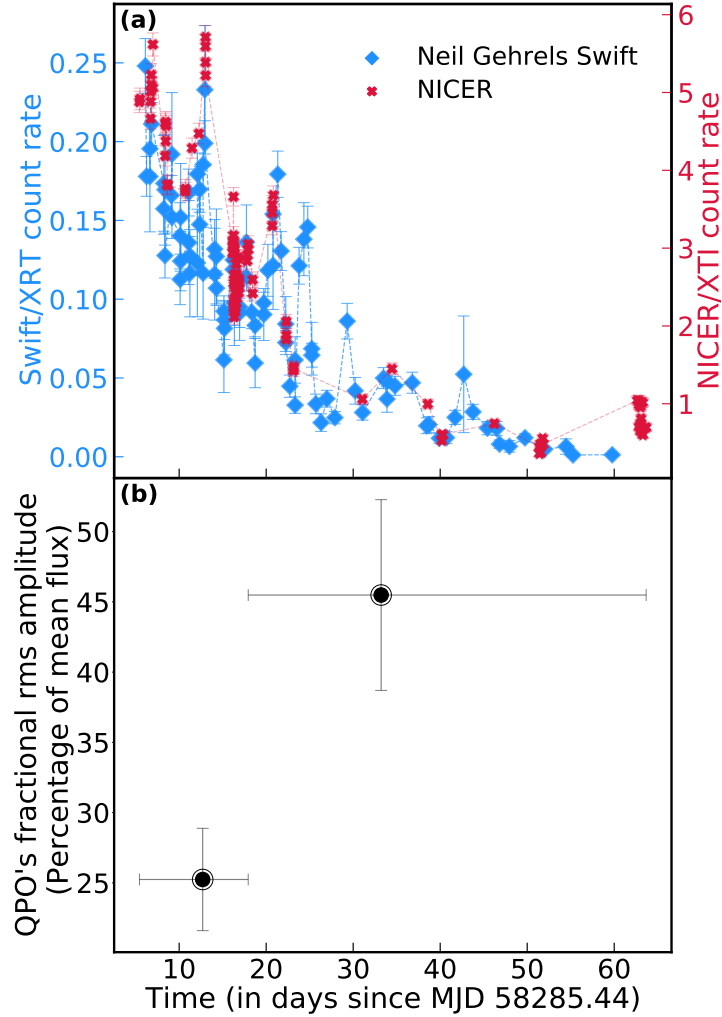


Figure 2: **(a) Comparison of *NICER/XTI* and Neil Gehrels *Swift/XRT* long-term light curves.** Both y-axes are in units of counts/sec. It is evident that AT2018cow’s long-term soft X-ray (0.25-2.5 keV) variability as observed by the non-imaging *NICER* telescope is same as that observed with Neil Gehrels *Swift/XRT* (0.3-2.5 keV) which has imaging capability. This suggests that the flux observed by *NICER* is dominated by AT2018cow with minimal contamination from other nearby astrophysical sources. **(b) Fractional root-mean-squared amplitude of the 224 Hz QPO vs time.** The signal appears to be stronger during the end of the outburst. The two values are 25 ± 4 and $45 \pm 7\%$ corresponding to exposures during $12.7^{+5.2}_{-7.3}$ and $33.2^{+30.5}_{-15.3}$ days, respectively. The jump in the QPO’s strength coincides with higher levels of variability on days timescale (XRT light curve in (a)) and also with the dramatic changes in optical spectra seen around the same time (5).

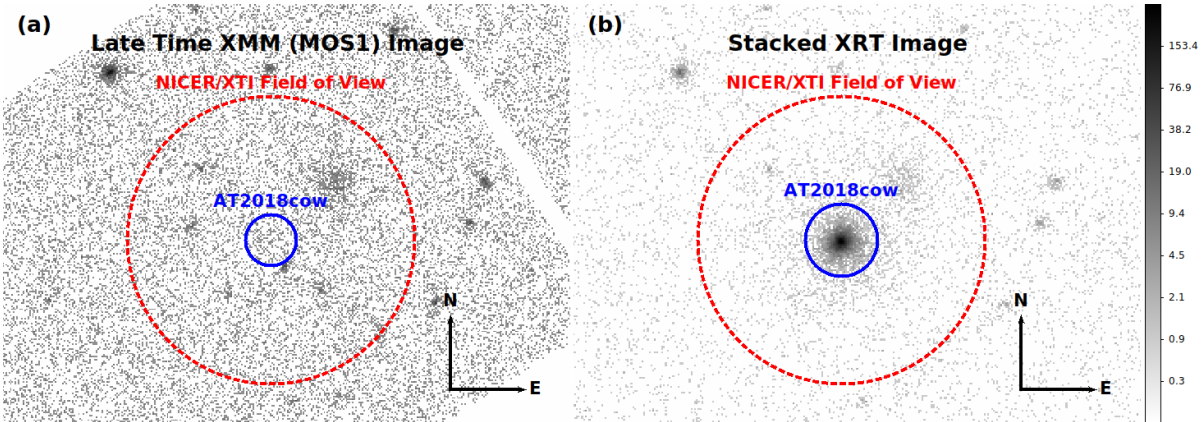


Figure 3: *XMM-Newton* and *Swift* images of *NICER*'s field of view of AT2018cow showing that there was minimal contamination from field sources. (a) *XMM-Newton*/MOS1 image of AT2018cow's field of view long after AT2018cow faded. The position of AT2018cow is indicated by a blue circle with a radius of 33". There is no contaminating point source directly coincident with AT2018cow. (b) Stacked Neil Gehrels *Swift*/XRT image of the field of view of AT2018cow. The blue circle of radius 47" is centered on AT2018cow's optical position (16:16:00.220 +22:16:04.91; J2000.0). This particular image was extracted by using all the archival XRT images as of July 2020. It is evident that while there are a few point sources present in *NICER*'s field of view, their contribution to overall XTI flux is negligible when compared to AT2018cow (see also Fig. 2). In both panels the outer/red (dashed) circles show *NICER*/XTI's approximate field of view of 3.1'. The north and east arrows are each 100" long. The colorbar show counts.

References

1. C. Inserra, Observational properties of extreme supernovae, *Nature Astronomy* **3**, 697 (2019).
2. M. R. Drout, *et al.*, Rapidly Evolving and Luminous Transients from Pan-STARRS1, *Astrophys. J.* **794**, 23 (2014).
3. M. Pursiainen, *et al.*, Rapidly evolving transients in the Dark Energy Survey, *Mon. Not. R. Astron. Soc.* **481**, 894 (2018).
4. L. E. Rivera Sandoval, *et al.*, X-ray Swift observations of SN 2018cow, *Mon. Not. R. Astron. Soc.* **480**, L146 (2018).
5. R. Margutti, *et al.*, An Embedded X-Ray Source Shines through the Aspherical AT 2018cow: Revealing the Inner Workings of the Most Luminous Fast-evolving Optical Transients, *Astrophys. J.* **872**, 18 (2019).
6. S. J. Prentice, *et al.*, The Cow: Discovery of a Luminous, Hot, and Rapidly Evolving Transient, *Astrophys. J.* **865**, L3 (2018).
7. D. A. Perley, *et al.*, The fast, luminous ultraviolet transient AT2018cow: extreme supernova, or disruption of a star by an intermediate-mass black hole?, *Mon. Not. R. Astron. Soc.* **484**, 1031 (2019).
8. M. Tanaka, *et al.*, Rapidly Rising Transients from the Subaru Hyper Suprime-Cam Transient Survey, *Astrophys. J.* **819**, 5 (2016).
9. A. Rest, *et al.*, A fast-evolving luminous transient discovered by K2/Kepler, *Nature Astronomy* **2**, 307 (2018).

- 185 10. A. Y. Q. Ho, *et al.*, The Photometric and Spectroscopic Evolution of Rapidly Evolving
186 Extragalactic Transients in ZTF, *arXiv e-prints* p. arXiv:2105.08811 (2021).
- 187 11. D. A. Perley, *et al.*, Real-time Discovery of AT2020xnd: A Fast, Luminous Ultraviolet
188 Transient with Minimal Radioactive Ejecta, *arXiv e-prints* p. arXiv:2103.01968 (2021).
- 189 12. D. L. Coppejans, *et al.*, A Mildly Relativistic Outflow from the Energetic, Fast-rising Blue
190 Optical Transient CSS161010 in a Dwarf Galaxy, *Astrophys. J.* **895**, L23 (2020).
- 191 13. A. Y. Q. Ho, *et al.*, The Koala: A Fast Blue Optical Transient with Luminous Radio Emis-
192 sion from a Starburst Dwarf Galaxy at $z = 0.27$, *Astrophys. J.* **895**, 49 (2020).
- 193 14. S.-C. Leung, *et al.*, A Model for the Fast Blue Optical Transient AT2018cow: Circumstellar
194 Interaction of a Pulsational Pair-instability Supernova, *Astrophys. J.* **903**, 66 (2020).
- 195 15. O. D. Fox, N. Smith, Signatures of circumstellar interaction in the unusual transient AT
196 2018cow, *Mon. Not. R. Astron. Soc.* **488**, 3772 (2019).
- 197 16. D. Kasen, L. Bildsten, Supernova Light Curves Powered by Young Magnetars, *Astrophys.*
198 *J.* **717**, 245 (2010).
- 199 17. B. D. Metzger, A. L. Piro, Optical and X-ray emission from stable millisecond magnetars
200 formed from the merger of binary neutron stars, *Mon. Not. R. Astron. Soc.* **439**, 3916 (2014).
- 201 18. M. Lyutikov, S. Toonen, Fast-rising blue optical transients and AT2018cow following
202 electron-capture collapse of merged white dwarfs, *Mon. Not. R. Astron. Soc.* **487**, 5618
203 (2019).
- 204 19. N. P. M. Kuin, *et al.*, Swift spectra of AT2018cow: a white dwarf tidal disruption event?,
205 *Mon. Not. R. Astron. Soc.* **487**, 2505 (2019).

- 206 20. M. Tanaka, *et al.*, Rapidly Rising Transients from the Subaru Hyper Suprime-Cam Tran-
207 sient Survey, *Astrophys. J.* **819**, 5 (2016).
- 208 21. M. Pursiainen, *et al.*, Rapidly evolving transients in the Dark Energy Survey, *Mon. Not. R.*
209 *Astron. Soc.* **481**, 894 (2018).
- 210 22. J. L. Tonry, *et al.*, ATLAS: A High-cadence All-sky Survey System, *Publ. Astron. Soc. Pac.*
211 **130**, 064505 (2018).
- 212 23. S. J. Smartt, *et al.*, ATLAS18qqn (AT2018cow) - a bright transient spatially coincident with
213 CGCG 137-068 (60 Mpc), *The Astronomer's Telegram* **11727**, 1 (2018).
- 214 24. A. Y. Q. Ho, *et al.*, AT2018cow: A Luminous Millimeter Transient, *Astrophys. J.* **871**, 73
215 (2019).
- 216 25. K. Huang, *et al.*, ALMA Polarimetry of AT2018cow, *Astrophys. J.* **878**, L25 (2019).
- 217 26. E. Quataert, D. Kasen, Swift 1644+57: the longest gamma-ray burst?, *Mon. Not. R. Astron.*
218 *Soc.* **419**, L1 (2012).
- 219 27. P. Mohan, T. An, J. Yang, The Nearby Luminous Transient AT2018cow: A Magnetar
220 Formed in a Subrelativistically Expanding Nonjetted Explosion, *Astrophys. J.* **888**, L24
221 (2020).
- 222 28. J. E. McClintock, R. A. Remillard, *Black hole binaries* (2006), vol. 39, pp. 157–213.
- 223 29. W. N. Alston, *et al.*, Discovery of an ~ 2 -h high-frequency X-ray QPO and iron $K\alpha$ rever-
224 beration in the active galaxy MS 2254.9-3712, *Mon. Not. R. Astron. Soc.* **449**, 467 (2015).
- 225 30. D. I. Ashton, M. J. Middleton, Searching for energy-resolved quasi-periodic oscillations in
226 AGN, *Mon. Not. R. Astron. Soc.* **501**, 5478 (2021).

- 227 31. M. Gierliński, M. Middleton, M. Ward, C. Done, A periodicity of ~1hour in X-ray emission
228 from the active galaxy RE J1034+396, *Nature* **455**, 369 (2008).
- 229 32. D. R. Pasham, *et al.*, A loud quasi-periodic oscillation after a star is disrupted by a massive
230 black hole, *Science* **363**, 531 (2019).
- 231 33. R. C. Reis, *et al.*, A 200-Second Quasi-Periodicity After the Tidal Disruption of a Star by
232 a Dormant Black Hole, *Science* **337**, 949 (2012).
- 233 34. D. Lin, J. A. Irwin, O. Godet, N. A. Webb, D. Barret, A ~3.8 hr Periodicity from an Ultrasoft
234 Active Galactic Nucleus Candidate, *Astrophys. J.* **776**, L10 (2013).
- 235 35. E. M. Ribeiro, M. Méndez, M. G. B. de Avellar, G. Zhang, K. Karpouzas, The amplitude
236 of the kilohertz quasi-periodic oscillations in 4U 1636-53 in the frequency-energy space,
237 *Mon. Not. R. Astron. Soc.* **489**, 4980 (2019).
- 238 36. A. L. Watts, T. E. Strohmayer, Neutron star oscillations and QPOs during magnetar flares,
239 *Advances in Space Research* **40**, 1446 (2007).
- 240 37. K. Kremer, *et al.*, Fast Optical Transients from Stellar-Mass Black Hole Tidal Disruption
241 Events in Young Star Clusters, *arXiv e-prints* p. arXiv:2012.02796 (2020).
- 242 38. C. Frohmaier, *et al.*, From core collapse to superluminous: the rates of massive stellar
243 explosions from the Palomar Transient Factory, *Mon. Not. R. Astron. Soc.* **500**, 5142 (2021).
- 244 39. M. Taylor, *et al.*, The Core Collapse Supernova Rate from the SDSS-II Supernova Survey,
245 *Astrophys. J.* **792**, 135 (2014).
- 246 40. J.-H. Chen, R.-F. Shen, Tidal Disruption of a Main-sequence Star by an Intermediate-mass
247 Black Hole: A Bright Decade, *Astrophys. J.* **867**, 20 (2018).

- 248 41. J. Dexter, D. Kasen, Supernova Light Curves Powered by Fallback Accretion, *Astrophys.*
249 *J.* **772**, 30 (2013).
- 250 42. E. Quataert, D. Lecoanet, E. R. Coughlin, Black hole accretion discs and luminous tran-
251 sients in failed supernovae from non-rotating supergiants, *Mon. Not. R. Astron. Soc.* **485**,
252 L83 (2019).
- 253 43. K. C. Gendreau, *et al.*, *SPIE* (2016), vol. 9905 of *Society of Photo-Optical Instrumentation*
254 *Engineers (SPIE) Conference Series*, p. 99051H.
- 255 44. N. Gehrels, *et al.*, The Swift Gamma-Ray Burst Mission, *Astrophys. J.* **611**, 1005 (2004).
- 256 45. D. N. Burrows, *et al.*, The Swift X-Ray Telescope, *Space Sci. Rev.* **120**, 165 (2005).
- 257 46. F. Jansen, *et al.*, XMM-Newton observatory. I. The spacecraft and operations, *Astron. As-*
258 *trophys.* **365**, L1 (2001).
- 259 47. L. Strüder, *et al.*, The European Photon Imaging Camera on XMM-Newton: The pn-CCD
260 camera, *Astron. Astrophys.* **365**, L18 (2001).
- 261 48. G. Prigozhin, *et al.*, *SPIE* (2012), vol. 8453 of *Society of Photo-Optical Instrumentation*
262 *Engineers (SPIE) Conference Series*, p. 845318.
- 263 49. R. A. Remillard, *et al.*, An Empirical Background Model for the NICER X-ray Timing
264 Instrument, *arXiv e-prints* p. arXiv:2105.09901 (2021).
- 265 50. J. S. Kaastra, J. A. M. Bleeker, Optimal binning of X-ray spectra and response matrix
266 design, *Astron. Astrophys.* **587**, A151 (2016).
- 267 51. M. van der Klis, *Timing Neutron Stars* (1988), vol. 262, pp. 27–70.

- 268 52. S. Vaughan, R. Edelson, R. S. Warwick, P. Uttley, On characterizing the variability proper-
269 ties of X-ray light curves from active galaxies, *Mon. Not. R. Astron. Soc.* **345**, 1271 (2003).
- 270 53. S. L. Shapiro, S. A. Teukolsky, *Black holes, white dwarfs, and neutron stars : the physics*
271 *of compact objects* (1983).
- 272 54. B. D. Metzger, P. Beniamini, D. Giannios, Effects of Fallback Accretion on Protomagnetar
273 Outflows in Gamma-Ray Bursts and Superluminous Supernovae, *Astrophys. J.* **857**, 95
274 (2018).
- 275 55. V. F. Shvartsman, Neutron Stars in Binary Systems Should Not Be Pulsars., *Soviet Astron-*
276 *omy* **15**, 342 (1971).
- 277 56. A. F. Illarionov, R. A. Sunyaev, Why the Number of Galactic X-ray Stars Is so Small?,
278 *Astron. Astrophys.* **39**, 185 (1975).
- 279 57. V. M. Lipunov, *Astrophysics of Neutron Stars* (1992).
- 280 58. K. Davidson, J. P. Ostriker, Neutron-Star Accretion in a Stellar Wind: Model for a Pulsed
281 X-Ray Source, *Astrophys. J.* **179**, 585 (1973).
- 282 59. A. L. Piro, C. D. Ott, Supernova Fallback onto Magnetars and Propeller-powered Super-
283 novae, *Astrophys. J.* **736**, 108 (2011).
- 284 60. K. Parfrey, A. Spitkovsky, A. M. Beloborodov, Torque Enhancement, Spin Equilibrium,
285 and Jet Power from Disk-Induced Opening of Pulsar Magnetic Fields, *Astrophys. J.* **822**,
286 33 (2016).
- 287 61. M. A. Alpar, On Young Neutron Stars as Propellers and Accretors with Conventional Mag-
288 netic Fields, *Astrophys. J.* **554**, 1245 (2001).

- 289 62. S. M. Ransom, S. S. Eikenberry, J. Middleditch, Fourier Techniques for Very Long Astro-
290 physical Time-Series Analysis, *Astron. J.* **124**, 1788 (2002).
- 291 63. B. C. Andersen, S. M. Ransom, A Fourier Domain “Jerk” Search for Binary Pulsars, *As-*
292 *trophys. J.* **863**, L13 (2018).
- 293 64. M. Bagchi, D. R. Lorimer, S. Wolfe, On the detectability of eccentric binary pulsars, *Mon.*
294 *Not. R. Astron. Soc.* **432**, 1303 (2013).

295 **Supplementary Materials.**

296 Materials and Methods

297 Figs. S1 to S11

298 Table S1

299 Caption for movie S1

300 Movie S1

301 Supplementary Text

302 All the codes to download the data from HEASARC public archive, reduce it, and reproduce
303 the results in this paper are available as supplementary files

304

Supplementary Material.

1 Data and Reduction.

The primary data used in this study was acquired by *NICER*'s X-ray Timing Instrument (XTI; (43)). We also utilized X-ray data from *Neil Gehrels Swift* observatory's (44) X-Ray Telescope (XRT; (45)) and *XMM-Newton*'s (46) European Photon Imaging Camera (EPIC; (47)). Below, we describe these data and their respective reduction methodologies in detail.

1.1 *NICER*/XTI:

The *NICER* X-ray observatory on board the International Space Station (ISS) has been carrying out full science operations since July 2017. XTI, which operates in the 0.25-12 keV band, is the primary instrument on *NICER* and it consists of 56 co-aligned X-Ray Concentrators (XRC). Each XRC focuses X-rays into an aperture of a Focal Plane Module (FPM) which consists of a single pixel (non-imaging) Silicon Drift Detector (SDD; (48)). At the beginning of science operations, 52 of the 56 FPMs were operational and together they provide an effective area of roughly 1900 cm² at 1.5 keV. This large effective area in the soft X-ray band combined with its ability to provide an absolute time resolution of better than 300 nanoseconds makes *NICER* a unique facility to detect the fastest known soft X-ray astrophysical signals.

NICER started monitoring AT2018cow roughly five days after its discovery in the optical band on MJD 58285.44 (6, 23)*. In total, 26 sets of observations were made between MJD 58290.87 and 58349.11 with observation IDs running between 1200250101 and 1200250126. These datasets were publicly available and we downloaded them from the HEASARC archive[†]. The cleaned events lists were extracted using the standard *NICER* Data Analysis Software (NICERDAS/HEASoft 6.28) tasks `nicercal`, `nimpumerge`, and `nicerclean`. The latest *NICER* calibration release `xti20200722` (22 July 2020) was used. The cleaned event files were barycenter-corrected using the `barycorr ftools` task. AT2018cow's optical coordinates (J2000.0): (244.000917, +22.268031) were used along with `refframe=ICRS` and `ephem=JPLEPH.430`. The Good Time Intervals (GTIs) were extracted with the `nimaketime` tool using the default filters: `nicersaafilt=YES`, `saafilt=NO`, `trackfilt=YES`, `ang_dist=0.015`, `st_valid=YES`, `elv=30`, `br_earth=40`, `cor_range=""`, `min_fpm=38`, `underonly_range=0-200`, `overonly_range="0.0-1.0"`, `overonly_expr="1.52*COR_SAX**(-0.633)"` Conservative `elv=30` and `br_earth=40` were used to avoid optical loading by reflected light.

Due to a combination of decreasing effective area and increased contribution from high-energy particles the signal-to-noise (source-to-background) at energies $\gtrsim 2.5$ keV deteriorates for faint X-ray targets like AT2018cow. **To quantify this further we extracted an energy spectrum of AT2018cow using the entire *NICER* data along with an estimate of the average**

*Throughout this paper we refer times with respect to this optical discovery date

[†]<https://heasarc.gsfc.nasa.gov/cgi-bin/W3Browse/w3browse.pl>

339 background spectrum using the 3c50 model (49). The spectrum in Fig. S1 is binned using
340 the optimal binning criterion of (50) in addition to ensuring a minimum of 1 count per
341 bin. It is evident that beyond 2.5 keV the ratio of source to background counts falls below
342 2. Therefore, to minimize the contribution from the highly variable particle background, which
343 is particularly important for variability studies, we only considered X-ray events in the energy
344 range of 0.25 to 2.5 keV. This background cannot be directly subtracted from the light curves,
345 and thus acts to increase the noise in the power density spectra of the source. These are tested
346 in detail in section 2.3. Our entire download and reduction procedure can be easily replicated
347 by running the codes that are available in supplementary files.

348 1.2 Neil Gehrels *Swift*/XRT:

349 Neil Gehrels *Swift* started monitoring AT2018cow on MJD 58288.44, roughly 3 days after its
350 optical discovery. The observing cadence varied over the 58 d window coincident with the
351 *NICER* observing campaign, i.e., until MJD 58349. For the first ≈ 3 weeks, Neil Gehrels *Swift*
352 observed AT2018cow 3-4 times per day and thereafter the cadence was reduced to roughly one
353 exposure per day. The individual exposure duration varied between 200 and 2000 s. In this
354 work we only used XRT data in the band pass of 0.3-2.5 keV to be consistent with *NICER*'s
355 energy range.

356 We started our analysis with the publicly available, raw, level-1 data from HEASARC
357 archive and reprocessed them with the `xrtpipeline` task of HEASoft. Initially, when the
358 source was bright, data was taken in both the Windowed Timing (WT) and the Photon Counting
359 (PC) modes. But as the source count rate dropped observations were only carried out in the
360 PC mode. For this work, we only used the PC mode data with event grades between 0 and 12.
361 Source events were extracted from an annular region centered on AT2018cow with the outer ra-
362 dius fixed at 47". This outer radius of 47" corresponds to roughly 90% (at 1.5 keV) of the light
363 from a point source (as estimated from XRT's fractional encircled energy function). The inner
364 radius was determined independently for each exposure by accounting for pile-up using the for-
365 malism described in the XRT user guide[‡]. Background events were extracted from an annular
366 region centered on AT2018cow with an inner and outer radii of 150" and 210", respectively.
367 These values were chosen to avoid any point sources in that background annulus.

368 1.3 *XMM-Newton*:

369 *XMM-Newton* observed AT2018cow on three separate occasions roughly 37 (obsID:
370 0822580401; 33 ks), 82 (obsID: 0822580501; 45 ks), and 218 days (obsID: 0822580601; 56
371 ks) after its optical discovery. In this work, we only used the European Photon Imaging Camera
372 (EPIC) data from the first and the last *XMM-Newton* epochs. The first exposure coincided with
373 the *NICER* monitoring campaign while the last one was taken several months after AT2018cow

[‡]<https://www.swift.ac.uk/analysis/xrt/pileup.php>

374 faded away. As the data were taken in the *full frame mode* the Nyquist frequencies of the pn
375 and MOS detectors were 6.8 Hz and roughly 0.2 Hz, respectively. To constrain the nature of
376 variability on frequencies of a few Hz we only used pn data from the first dataset. For the last
377 exposure MOS1 provides the best spatial resolution and hence we used only MOS1 data.

378 We started *XMM-Newton*/EPIC data reduction with the raw Observation Data Files (ODF)
379 and reprocessed them using the XMM Science Analysis Software's (xmmsas version 17.0.0)
380 tasks `epproc` and `emproc` for the pn and MOS data, respectively. We employed standard
381 data filters of ($PATTERN \lesssim 12$) and ($PATTERN \lesssim 4$) for the pn and the MOS data, respectively.
382 We only considered events in the soft X-ray band of 0.25-2.5 keV to be consistent with *NICER*'s
383 data (see section 1.1). We removed intervals of background flaring by manually inspecting the
384 10-12 keV light curve as outlined in the XMM-Newton data analysis guide. The source count
385 rates were extracted from a circular region of radius 33'' which corresponds to 90% of the
386 light from a point source as estimated by the fractional encircled energy of EPIC instruments.
387 Background events were extracted from two nearby circular regions of radius 50''.

388 **2 Analysis**

389 **2.1 *NICER* identifies a QPO candidate**

390 We first divided the *NICER* data into 256-s continuous segments and extracted their light curves
391 with a time resolution of 1/2048 s. This resulted in a total of 105 light curve segments, i.e., a
392 cumulative exposure time of 26,880 s. With the mean count rate varying between 5.7 and 0.4
393 count s^{-1} this choice of 256 s ensured $\gtrsim 100$ counts in each segment. A Leahy normalized
394 (Poisson noise level of 2) power density spectrum (PDS) was extracted from each of these
395 individual light curves and they were all combined to obtain an average PDS (see the left panel
396 of Fig. 1). The PDS is consistent with a value of 2 (Poisson noise level) at all frequencies except
397 for excess around 224 Hz.

398 **2.2 Estimating the global statistical significance**

399 To estimate the global false alarm probability of this QPO candidate near 224 Hz by properly
400 accounting for the underlying noise and also all the search trials we devised a Monte Carlo ap-
401 proach. The basic idea is to simulate a large number ($\sim 10^5$ in our case) of random realizations
402 of the underlying noise process, i.e., light curves that capture the underlying PDS continuum.
403 Then, extract a power spectrum just like the real data, perform a global search (at all frequen-
404 cies) for QPOs, and finally, estimate the probability of seeing a noise fluctuation that resembles
405 a QPO as strong as the one found in the real data (left panel of Fig. 1). Because a robust sig-
406 nificance estimate relies on accurate knowledge of the underlying noise process, at first, we lay
407 extra emphasis on understanding the nature of the PDS continuum.

2.2.1 Probability plot: a qualitative assessment of noise

Visually, the power spectrum in Fig. 1 appears to be flat (or white) between a few Hz to 1024 Hz, except for the bins surrounding the QPO feature at 224 Hz. Formally, a test for flatness or “whiteness” of a power spectrum is a test for whether the power spectral values are χ^2 distributed (51). First, we assess this qualitatively by extracting a so-called probability plot. It shows the theoretical quantiles of an assumed distribution (χ^2 with $2 \times 105 \times 2048$ degrees of freedom (dof) scaled by a factor of $1/(105 \times 2048)$ in the present case) against the ordered sample values, i.e., observed noise powers. This particular χ^2 distribution was used to compare because the PDS in the left panel of Fig. 1 was obtained by averaging 105 individual PDS followed by further averaging in frequency by a factor of 2048. If the observed data fall on a straight line on the probability plot then that indicates that they are consistent with the theoretical distribution that they are compared against. To remove the bias from the QPO we removed bins whose frequencies fall between 200 and 250 Hz. Also because we are really only interested in the nature of the noise continuum in the vicinity of 224 Hz we removed bins with frequencies above 600 Hz. Because there are many bins between 600 and 1024 Hz they could, in principle, skew the results. It is evident from Fig. S2 that the data points on the probability plot roughly follow a straight line (red line) and thus appear “qualitatively” consistent with a χ^2 distribution with $2 \times 105 \times 2048$ dof scaled by a factor of $1/(105 \times 2048)$. For completeness, we repeated this by considering all bins between 1/256 Hz and 1024 Hz and the result is the same.

2.2.2 PDS continuum is consistent with White noise

To investigate the nature of the PDS continuum quantitatively, we performed the Kolmogorov-Smirnov (K-S) and the Anderson-Darling goodness-of-fit tests under the null hypothesis that the PDS continuum is white, i.e., the power values between 1/256 and 600 Hz, except for bins between 200-250 Hz, are χ^2 distributed with $2 \times 105 \times 2048$ dof scaled by a factor of $1/(105 \times 2048)$. The basic idea with these statistics is that they measure the maximum deviation between the Empirical Distribution Function (EDF) of the data and that of a comparison distribution. Therefore, the better the distribution fits the data, the smaller these statistics will be.

Before we evaluated the K-S and Anderson-Darling test statistics we computed the EDF and the probability density function (PDF) of the continuum noise powers. These are shown in the top two panels of Figure S3) along with the expected EDF and PDF curves for a χ^2 distribution (solid red). Similar to the probability plot, the data appear to track the expected χ^2 distribution quite well.

We computed the K-S statistic using the EDF. To evaluate whether this value can be used to reject or not reject the null hypothesis, we calculated the distribution of K-S statistic values of EDFs drawn from the expected distribution: χ^2 with $2 \times 105 \times 2048$ dof scaled by a factor of $1/(105 \times 2048)$. We compute this K-S statistic distribution as follows.

1. First, we randomly draw 57 values from a χ^2 with $2 \times 105 \times 2048$ dof. Here, 57 refers

446 to the total number of power spectral continuum values between 100 and 600 Hz and
447 excluding those with frequencies between 200 and 250 Hz.

448 2. Then we evaluate the EDF of this random sample of 57 and scale it by $1/(105 \times 2048)$

449 3. Finally, we compute its K-S statistic value.

450 The above steps are repeated 10,000 times to get a distribution of the K-S test statistic for a
451 χ^2 distribution with $2 \times 105 \times 2048$ dof for a given sample size of 57. This is shown as a blue
452 histogram in the bottom left panel of Fig. S3. AT2018cow's observed K-S test statistic (dashed
453 vertical red line), which is a measure of maximum deviation between the observed EDF and
454 the theoretical Cumulative Distribution Function (CDF), is lower than the typical value (solid
455 magenta vertical line). This indicates that the null hypothesis cannot be rejected even at the 90%
456 confidence level and suggests that noise powers in the PDS continuum are very much consistent
457 with the expected χ^2 distribution, i.e., *NICER*'s PDS continuum is consistent with being white
458 between 1/256 and 1024 Hz.

459 To ensure the above conclusion is not dependent on the choice of the statistic used we also
460 computed the Anderson-Darling statistic. Similar to above, we computed its distribution using
461 bootstrap simulations (see the bottom right panel of Fig. S3). Again, it is clear that the statistic
462 computed from the observed PDS of AT2018cow (vertical dashed red line) is consistent with
463 the expected χ^2 distribution. We repeated all the above tests by considering all the bins between
464 1/256 to the Nyquist frequency of 1024 Hz (excluding those between 200-250 Hz) and the
465 results remained the same. We also varied the frequency upper limit from 400 Hz to 800 Hz
466 and they all yield the same result.

467 2.2.3 Modeling the PDS

468 Next, we carried out a straightforward method to test for flatness of the PDS continuum. We fit
469 the continuum, i.e., excluding the bins between 200 and 250 Hz, with two different models: a
470 constant (white noise) and a constant + power-law (white + red noise). The model consisting
471 of just a constant gave a χ^2 of 129.9 with 121 dof while the constant+power-law yields a χ^2 of
472 125.1 with 119 dof. We repeated this exercise with a PDS frequency resolution of 1/256 Hz,
473 i.e., lowest frequency of 1/256 Hz. This also did not yield in significant χ^2 improvement. This
474 argues that a power-law component is not formally required by the data.

475 Then we modelled the entire PDS (including the QPO bins) with a constant and a constant
476 plus a Lorentzian to account for the QPO feature. While the former yielded a χ^2 of 153.6
477 with 127 dof, adding a Lorentzian improved the χ^2 by 23.9, i.e., resulted in a χ^2 of 129.8 with
478 124 dof. This measurement forms the basis for our Monte Carlo simulations described in the
479 following sections. The best-fit QPO centroid is 224.4 ± 1.0 Hz respectively.

480 The ratio of the sum of all the power values within the QPO width to error on that sum
481 gives a quick estimate of the signal-to-noise of the QPO. For the 224 Hz feature this value
482 is $0.0295/0.0061 = 4.8$. Combined with the mean source count rate of 2.62 ± 0.01 counts/sec,

483 these values can also be used to estimate the fractional root-mean-squared (rms) amplitude of
484 the QPO to be $100 \times \sqrt{0.0295 * 8 / 2.62} = 30 \pm 3\%$ (8 Hz is the frequency resolution here).

485 **2.2.4 Confirming white noise at lower (mHz) frequencies using longer/continuous light** 486 **curves from *XMM-Newton***

487 To ensure that AT2018cow’s soft X-ray PDS is consistent with white noise at lower frequen-
488 cies, i.e., 10^{-3} - 10^{-2} Hz we used a ~ 30 ks *XMM-Newton* exposure that coincided with *NICER*
489 monitoring. *NICER* data are not ideal for sampling at these low frequencies because of short
490 exposures. We extracted an average 0.25-2.5 keV *XMM-Newton* PDS to find that there is no
491 evidence for red noise down to in the frequency range of $\sim 10^{-3}$ - a few Hz. The EPIC-pn PDS
492 with a Nyquist frequency of 6.8 Hz is shown in Fig. S4.

493 Also, if there is strong red noise at low frequencies (or long timescales) that can manifest as
494 variability on faster timescales. This effect is known as red noise leakage (52). In the present
495 context, this means that if there is strong red noise below 1/256 Hz, that can, in principle, leak
496 into the 100s of Hz range. The PDS in Fig. S4 also shows that the red noise leakage affect is
497 negligible.

498 Based on all the above described tests and Figs. S2, S3 and S4 we conclude that over the
499 frequency range of 1/256 to 1024 Hz the effect of red noise is negligible and that the PDS is
500 consistent with being white.

501 **2.2.5 Monte Carlo Simulations to Estimate Global Statistical Significance**

502 When the potential signal you are trying to test for is broad and distributed over several fre-
503 quency bins, the standard approach of estimating significance based on just the highest bin will
504 not suffice. As it will not include the contribution from all the QPO bins it will fail to capture
505 the true significance estimate. Therefore, we devise an approach that can account for multiple
506 frequency bins. The steps are as follows:

- 507 1. After establishing that AT2018cow’s soft X-ray variability, on timescales of 1/256 Hz to
508 1024 Hz is white, i.e., frequency-independent, we generate a set of 105 256-s “simulated”
509 light curves by simply randomly shuffling each observed light curve independently, **i.e.,**
510 **time bins do not move from one segment to another.** In practice (in Python) this is
511 done using `numpy’s random.shuffle` function.
- 512 2. Then we extracted an “simulated” average PDS from these shuffled light curves and re-
513 binned it to a frequency resolution of 8 Hz just like the real PDS in Fig. 1.
- 514 3. We then searched for a QPO within this simulated average PDS at all frequencies, i.e.,
515 we fit a constant and a constant + a Lorentzian model with the centroid constrained to the
516 ends of each frequency bin and the width allowed to be free, and computed an array of
517 $\Delta\chi^2$ values.

518 4. Finally, we record the maximum $\Delta\chi^2$ value from the array of $\Delta\chi^2$ value from step 3

519 The above steps were repeated 10^5 times to get an array of 10^5 maximum $\Delta\chi^2$ values. We
520 used 8 cores on a laptop for these simulations which took a total of roughly 180 hours for 10^5
521 simulations. From these measurements we computed the probability to exceed a certain $\Delta\chi^2$
522 value, i.e., 1-CDF. This is shown in the right panel of Fig. 1. For guidance, the 99.73% and
523 99.99% confidence levels are indicated. **Another way to realize the results of the simulations
524 above is through the probability density function (PDF) and the CDF of the maximum $\Delta\chi^2$
525 values. These are shown in Fig. S5.** The QPO found in *NICER* data is statistically significant
526 at roughly 2×10^{-4} level which translates to 3.7σ equivalent for a normal distribution.

527 **2.2.6 XMM-Newton/EPIC and Swift/XRT data cannot be used for finding/studying the** 528 **224 Hz QPO**

529 *XMM-Newton*/EPIC’s pn and MOS data were taken in the so-called full-frame mode which
530 provide a time resolution of 73.4 ms and 2.6 s, respectively. The majority of *Swift*/XRT data
531 were taken in the Photon Counting (PC) mode which has a time resolution of about 2.5 s.
532 Thus, these datasets have Nyquist frequencies that are significantly lower than the QPO’s
533 frequency of 224 Hz. As a consequence, EPIC and XRT data cannot be used to search for
534 and study the 224 Hz QPO found in *NICER* data.

535 **2.3 Ruling out an instrumental and a non-astrophysical origin**

536 All *NICER* events have two types of pulse height amplitude (PHA) data: the “slow” PHA
537 derived from the slow chain electronics and the “fast” PHA (PHA_FAST) derived by the fast
538 chain electronics. The standard *NICER* calibration scripts convert this information into pulse
539 invariant (PI) and PI_FAST, respectively. For events with energies $\lesssim 600$ eV the fast-chain is not
540 triggered and thus PI_FAST is undefined. Although *NICER*’s XTI is a non-imaging instrument,
541 there is a way to separate the background (particles, cosmic X-rays, and low-energy/optical
542 light loading events) and the source events using the values of PI and PI_FAST. The X-ray events
543 from an on-axis astrophysical source, high-energy particles, light loading, and the cosmic X-ray
544 background occupy a separate region of the PI vs PI_RATIO (PI/PI_FAST) plot[§].

545 To ensure the detected signal does not originate from any of these three types of background,
546 we extracted an average PDS of all three backgrounds using their corresponding events within
547 the GTIs. There was no evidence of a variability enhancement around 224 Hz (or elsewhere) in
548 any of these three backgrounds (see Fig. S6). We describe each of these analyses in a bit more
549 detail below.

[§]https://heasarc.gsfc.nasa.gov/docs/nicer/mission_guide/

2.3.1 The signal is not present in the particle background

High energy particles from space can interact with the silicon material in *NICER*/*XTI*'s SDDs to produce charge and mimic X-ray events. These particle events are registered as enhancements in the so-called overshoot rate for each FPM. Also, because particles have energies much higher than *NICER*'s nominal bandpass of 0.25-12 keV their incidence is also evident in the 13-15 keV count rate. Thus, if this QPO signal were from background particle events it would also be present in the overshoot and the 13-15 keV data.

We extracted the overshoot only event lists using the *NICER* data reduction pipeline described above but with a modified event flag `EVENT_FLAG=bxxx01x`. This particular choice selects only the overshoot events. Then, similar to our analysis on source events, we applied barycenter correction on these unfiltered (but calibrated) events. Because overshoots do not contain a PI value they cannot be energy calibrated like real X-ray events. We then extracted the average PDS using only the events within the standard GTIs (see the top-left panel of Fig. S6). There is no evidence for an excess variability anywhere in the PDS.

High-energy events with energies in between 13 and 15 keV that includes the *trumpet* and all `PI_RATIOS` were extracted using the standard *NICER* tools. Then they were barycenter-corrected using the `barycorr` tool similar to the source events. The average PDS from these events is shown in the top-right panel of Fig. S6 and does not show any obvious QPO like features anywhere in the considered frequency range.

The average count rate of the overshoots and the 13-17 keV were 18.7 and 0.18 counts/sec, respectively. The former value is much higher than AT2018cow's mean soft X-ray count rate of 2.62 counts/s. Therefore, if the 224 Hz QPO were from background particles it would have shown up in the top-left panel of Fig. S6 (sensitivity towards a QPO increases linearly with count rate (51)). Thus, the top two panels of Fig. S6 allows us to rule out a particle background origin for the 224 Hz QPO.

2.3.2 The signal is not due to optical light leak events

Optical light, either directly from the Sun or bright Earth at low angles, or from reflections off ISS surfaces can make its way into the FPMs. This manifests as a noise peak in each FPM whose energy spectrum peaks at an energy below 0.25 keV. However, when this light loading, which is time variable, is strong, the tail end of the noise distribution can leak into higher energies (>0.25 keV) and contaminate the source events. This effect is especially important for faint targets like AT2018cow. The event filtering described in section 1.1 should already remove epochs of high light loading. To further ensure that the QPO signal is not a result of variability of "light leak" events, if any, we extracted a 0.0-0.2 keV PDS. Similar to the inband PDS we first extracted the 0.0-0.2 keV events using the standard *NICER* tasks. We then barycenter-corrected them and then computed an average PDS using events within the standard GTIs. The resulting power spectrum shown in the bottom-left panel of Fig. S6 allows us to rule out a light leak origin for this QPO.

588 **2.3.3 The signal is not present in cosmic X-ray background events within *NICER*'s Field** 589 **of View (FoV)**

590 Although *NICER*/XTI is a non-imaging instrument, it's design with the slow and the fast chain
591 electronics allows us to separate on-axis events from the off-axis ones. While the on-axis
592 events make a "Trumpet"-like cluster in the PI vs PI_RATIO plot, the off-axis events, i.e., those
593 from cosmic X-rays and other point sources in the FoV, fall above the "Trumpet". If the QPO
594 signal is associated with AT2018cow (placed on-axis during each observation) then it should
595 not be present in the trumpet-rejected events. The inband PDS shown in Fig. 1 already ex-
596 cludes trumpet-reject events. However, to be absolutely sure, we extract an average PDS of the
597 trumpet-rejected events within the standard GTIs. We extracted the trumpet-rejected events by
598 first extracting the standard cleaned event lists with `trumpfilt=NO`. These were barycenter-
599 corrected and then screened to only include events between 0.25 and 10 keV that fell above the
600 trumpet edge defined by the curve $PI_RATIO = 1.1 + 120/PI$. An average PDS was extracted in
601 same manner as the inband PDS. This is shown in the bottom-right panel of Fig. S6 and it is
602 evident that a 224 Hz QPO is not present in events that describe the cosmic X-ray background
603 and any contaminating sources in the field of view.

604 **2.3.4 The signal is present in all Measurement and Power Units (MPUs)**

605 If this signal is astrophysical in origin then it must be uniformly distributed across all the 52
606 active FPMs which are controlled by 7 MPUs[¶]. We checked to ensure that is the case by
607 extracting several average PDS, but with data from one MPU removed at a time. The resulting 7
608 PDS with the ID of the removed MPU at the top are shown in Fig. S7. The QPO is evident in all
609 the 7 PDS with a fractional rms amplitude value consistent with each other. This demonstrates
610 that the QPO events are uniformly distributed across all MPUs and not just limited to any single
611 unit.

612 **2.3.5 The signal is not due to "GPS" noise**

613 One other plausible instrument-related source of origin of this signal is the co-called "Global Po-
614 sition System (GPS) noise". During the ground testing of *NICER*'s MPUs anomalous cross-talk
615 signals between the FPM input line and the GPS pulse-per-second (PPS) line were observed.
616 This can result in certain FPMs registering pseudo events (non-cosmic) immediately following
617 a GPS PPS tick, usually within the first 4 ms after the tick. In principle, this could produce a 1
618 second QPO with roughly a 4 ms QPO width, although it has never been reported in any of the
619 analysis of several *NICER* targets thus far. This is obviously at a different frequency compared
620 to the 224 Hz QPO from observations of AT2018cow. Nevertheless, we rule out GPS noise as
621 the source of AT2018cow's QPO by first removing all events with time stamps occurring within
622 10 ms of an integer second of the original non-barycenter corrected data. Then, we barycenter

[¶]https://heasarc.gsfc.nasa.gov/docs/nicer/mission_guide/

623 corrected the remaining events and extracted an average PDS in the exact same manner as the
624 PDS in Fig. 1. The resulting PDS shown in Fig. S8 is virtually indistinguishable from the left
625 panel of Fig. 1. This is not too surprising as the above only excludes a small fraction of all
626 events. Fig. S8 shows that the signal is still present after removing the plausible GPS noise
627 events and rules out GPS noise as the origin of this QPO.

628 **2.3.6 AT2018cow dominates the X-ray emission in *NICER*/*XTI*'s FoV**

629 *NICER*/*XTI* is a non-imaging detector with a field of view of roughly 30 arcmin². Thus it is
630 plausible that a contaminating point source other than AT2018cow could have produced this
631 QPO signal. To investigate this possibility, we extracted an image by stacking the entire Neil
632 Gehrels *Swift*/*XRT* archival data of AT2018cow (see the right panel of Fig. 3). It is clear from
633 these images that AT2018cow is the brightest point source within *XTI*'s FoV. The contribution
634 from the other point sources is negligible.

635 Furthermore, we can directly compare *NICER*/*XTI* light curve of AT2018cow's FoV with
636 resolved *XRT* light curve. The variability features in *XRT* light curve are also evident in *XTI*
637 data (see Fig. 2). This independently implies that AT2018cow dominates the X-ray emission in
638 *XTI*'s FoV.

639 As a final check, we also investigated a late time *XMM-Newton* image of AT2018cow's
640 FoV to rule out contamination by a point source within *XRT* or *EPIC* instrument's point spread
641 functions. The left panel of Fig. 3 show *MOS1* image of AT2018cow's FoV at late times. We
642 used *MOS1* because it offers the best pixel size of 4.1". It is evident that long after AT2018cow's
643 optical decay, there is no X-ray emission present at its location and rules out a contaminating
644 source very close to the position of AT2018cow.

645 The combination of the above three analyses affirms that the majority of emission detected
646 by *XTI* between MJD 58290.87 and 58349.11 and thus the 224 Hz signal originates from
647 AT2018cow.

648 **2.3.7 A similar signal is NOT present in any AGN monitored by *NICER* during the same 649 epoch**

650 AGN host supermassive black holes ($\gtrsim 10^5 M_{\odot}$) and hence causality argument suggests that they
651 should not show any variability on timescales of milliseconds, i.e., hundreds of Hz. Therefore,
652 to be absolutely sure that the 224 Hz QPO signal is unique to AT2018cow data we also extracted
653 average PDS of 3 active galactic nuclei that *NICER* monitored during the same epoch, i.e., only
654 using their observations between MJD 58290.87 and 58349.11. These resulting average PDS
655 are shown in Fig. S10 and a 224 Hz feature is not seen in any of them.

656 **2.4 QPO is highly persistent**

657 The fact that the QPO is detected in the average PDS extracted from data accumulated over a
658 temporal baseline of ≈ 60 days suggests that the QPO is likely present for a significant fraction

659 of the X-ray monitoring. To further test this we estimated the strength (signal-to-noise ratio) of
 660 the QPO as a function of the accumulated exposure. We started with the first 5 ks of exposure,
 661 extracted an average PDS, and fit the 224 Hz feature with a Lorentzian. From thereon, for every
 662 additional 256-s exposure, we repeated this process of extracting an average PDS, followed
 663 by modelling the 224 Hz feature with a Lorentzian. At every point, the QPO strength was
 664 calculated as the ratio of the sum of the powers within the width of the best-fit QPO and its
 665 errorbar. A normalized QPO strength was also estimated by dividing the QPO strength with
 666 the average count rate which itself evolves with the accumulated exposure. It is evident from
 667 Fig. S9 that the overall strength of the QPO gradually increases with increasing exposure. This
 668 demonstrates that:

- 669 1. The QPO was persistent for a substantial fraction of the 60 d monitoring program, i.e.,
 670 for one billion cycles ($\sim 60\text{days}/4.4\text{ms}$).
- 671 2. The QPO signal does not originate from any single exposure of the *NICER* monitoring.

672 The same result can be visualized in the form of a movie showing the evolution of the
 673 average PDS as a function of increasing exposure. This can be found as a supplementary file
 674 (Movie S1). A gif version is also available.

675 **3 Upper limits on fractional rms of harmonics**

676 **We estimate the 3σ upper limits on the fractional rms of potential QPOs near the harmonic**
 677 **frequencies of the 224 Hz QPO using a similar Monte Carlo methodology described in sec.**
 678 **2.2.5. The procedure for estimating upper limit on fractional rms near $\frac{1}{2} \times (224 \pm 16)$ Hz is**
 679 **described below but the same methodology was employed for estimating QPO rms upper**
 680 **limits near $\frac{3}{2} \times (224 \pm 16)$ Hz and $2 \times (224 \pm 16)$ Hz.**

- 681 **1. First, we simulate a noise power spectrum exactly as described in steps 1-2 of sec.**
 682 **2.2.5.**
- 683 **2. Then, we fit a Lorentzian with centroid constrained between 104 and 120 Hz ($224 \pm 16/2$)**
 684 **and width fixed to a value corresponding to a coherence value of 5. The value of the**
 685 **fractional rms and the $\Delta\chi^2$ estimated from the best-fit Lorentzian parameters is**
 686 **recorded.**
- 687 **3. The above steps are repeated 5000 times to get two arrays: one for $\Delta\chi^2$ values and**
 688 **another for fractional rms estimates (see the left panel of Fig. S11). We discard all**
 689 **values corresponding to simulations that result in a dip in the PDS near 110 Hz.**
- 690 **4. Using the simulated $\Delta\chi^2$ values above we estimate the $\Delta\chi^2$ value corresponding to**
 691 **99.73% (3σ).**

692 **5. Finally, using the mapping between the $\Delta\chi^2$ vs fractional rms values (see left panel**
 693 **of Fig. S11) we estimate the fractional rms corresponding to the value of $\Delta\chi^2$ which**
 694 **marks the 3σ level.**

695 **The same steps were repeated for estimating the rms upper limit with coherence values of**
 696 **10 and 20. The 3σ upper limits from the above analysis are tabulated in Table. S2.**

697 **4 Implications for a magnetar scenario**

698 The bolometric light curve of AT2018cow reached a luminosity of $\sim 4 \times 10^{44}$ erg s^{-1} on time a
 699 timescale of a few days after the explosion, and the luminosity decayed as $L_e \propto t^{-\alpha}$, where α
 700 ≈ 2.5 at times, $t \gtrsim t_e \sim 10^3 - 10^5$ s. The central engine responsible for powering the optical and
 701 X-ray emission must supply a total energy $E_e \sim 10^{50} - 10^{52}$ erg over a characteristic timescale
 702 of t_e . Degeneracy exists in these properties because we do not know how much of the kinetic
 703 energy of the ejecta is supplied by the initial explosion itself, versus injected at later times by
 704 the engine.

705 Two models for the central engine include: (1) a stellar-mass black hole of mass $\sim 10\text{-}30M_\odot$
 706 created by the failed explosion of a very massive star, which is accreting fall-back material from
 707 the outer layers of the extended progenitor at a highly super-Eddington rate; (2) a magnetar
 708 with a rapid birth period $P_0 \sim$ ms and a strong dipole magnetic field $B \sim 10^{14}\text{-}10^{15}$ G. The
 709 magnetar may be spinning down in isolation, or it may be accreting fall-back material as in the
 710 black hole. The latter scenario may be supported by the predicted decline rate of the engine
 711 luminosity $L_e \propto t^{-2.38}$.

712 We now consider models for the origin of the QPO-like feature at $f_{\text{QPO}} = 224$ Hz, assuming
 713 it is related to the spin period of a magnetar, $P_{\text{QPO}} = 1/f_{\text{QPO}} \approx 4.44$ ms or half of that value
 714 ($P_{\text{QPO}} = 8.9$ ms). Alternatively, the QPO could arise directly in the accretion disk (of the black
 715 hole or neutron star), e.g. as in an X-ray binary QPO, a possibility which is not addressed below.

716 **4.1 Spin of an isolated pulsar or magnetar**

717 Here we consider the possibility that the observed QPO at 224 Hz is the spin frequency of a
 718 pulsar or magnetar. The traditional picture of pulsar spin evolution (see, e.g., (53), for a review)
 719 is that the pulsar's rotational energy

$$E_{\text{rot}}(\nu) = \frac{I}{2} (2\pi\nu)^2 \sim 1 \times 10^{51} \text{ erg} \left(\frac{\nu}{224 \text{ Hz}} \right)^2, \quad (\text{S1})$$

720 where $I \sim 10^{45}$ g cm^2 is the stellar moment of inertia, can supply energy at a rate

$$L_{\text{sd}} = 4\pi^2 I \nu \dot{\nu} \sim 3 \times 10^{43} \text{ erg s}^{-1} \left(\frac{\nu}{224 \text{ Hz}} \right) \left(\frac{\dot{\nu}}{3 \times 10^{-6} \text{ Hz s}^{-1}} \right) \quad (\text{S2})$$

721 to power radiation from a rotating magnetic dipole at a rate $L_{\text{mag}} \propto B^2 \nu^4$. Equating the two
 722 rates yields an estimate of the pulsar magnetic field

$$B \approx 2 \times 10^{13} \text{ G} \left(\frac{\nu}{224 \text{ Hz}} \right)^{-3/2} \left(\frac{-\dot{\nu}}{3 \times 10^{-6} \text{ Hz s}^{-1}} \right)^{1/2} \quad (\text{S3})$$

723 and evolution of spin frequency

$$\nu = \nu_0 (1 + t/t_{\text{sd}})^{-1/2}, \quad (\text{S4})$$

724 which then leads to

$$L_{\text{sd}} = \frac{E_{\text{rot}}(\nu_0)}{t_{\text{sd}}} \frac{1}{(1 + t/t_{\text{sd}})^2} = \frac{3 \times 10^{43} \text{ erg s}^{-1}}{(1 + t/t_{\text{sd}})^2} \left(\frac{\nu_0}{224 \text{ Hz}} \right) \left(\frac{-\dot{\nu}_0}{3 \times 10^{-6} \text{ Hz s}^{-1}} \right), \quad (\text{S5})$$

725 where the characteristic timescale for spin-down is

$$t_{\text{sd}} = -\frac{\nu_0}{2\dot{\nu}_0} \approx 430 \text{ d} \left(\frac{\nu_0}{224 \text{ Hz}} \right) \left(\frac{-\dot{\nu}_0}{3 \times 10^{-6} \text{ Hz s}^{-1}} \right)^{-1} = 430 \text{ d} \left(\frac{\nu_0}{224 \text{ Hz}} \right)^{-2} \left(\frac{B}{2 \times 10^{13} \text{ G}} \right)^{-2} \quad (\text{S6})$$

726 and ν_0 and $\dot{\nu}_0$ are the initial spin frequency and spin frequency time derivative, respectively.
 727 One can see from equation (S5) that the luminosity changes little at times $t \ll t_{\text{sd}}$ and decreases
 728 as $L_{\text{sd}} \propto t^{-2}$ when $t \gg t_{\text{sd}}$.

729 The QPO in AT2018cow is observed to persist at 224 Hz for about 60 days with a width of
 730 < 16 Hz. This constrains the frequency change to

$$|\dot{\nu}| < 16 \text{ Hz}/60 \text{ d} = 3 \times 10^{-6} \text{ Hz s}^{-1} \quad (\text{S7})$$

731 and magnetic field and spin-down timescale to $B < 2 \times 10^{13} \text{ G}$ and $t_{\text{sd}} > 430 \text{ d}$, respectively.
 732 Even stricter constraints of

$$-\dot{\nu} < 3 \times 10^{-8} \text{ Hz s}^{-1} \left(\frac{L}{3 \times 10^{41} \text{ erg s}^{-1}} \right) \quad (\text{S8})$$

733 and $B < 2 \times 10^{12} \text{ G} (L/3 \times 10^{41} \text{ erg s}^{-1})^{1/2}$ are obtained from equations (S3) and (S5) by
 734 noting that the bolometric and X-ray luminosities are seen to decrease at times $< 60 \text{ d}$ to a
 735 lowest value of $\sim 10^{41} \text{ erg s}^{-1}$ (5).

736 The above discussion rules out the possibility of a millisecond magnetar powering AT2018cow.
 737 If $B > 10^{14} \text{ G}$, then $t_{\text{sd}} < 20 \text{ d}$ and $-\dot{\nu} > 1 \times 10^{-4} \text{ Hz s}^{-1}$. The latter in particular implies
 738 the QPO frequency would have decreased by more than 100 Hz in a span of just 10 days. **A**
 739 **young pulsar with a Crab-like magnetic field of a few times 10^{12} G is only possible in this**
 740 **scenario if an additional source of energy were present early on. A low-B value cannot**
 741 **explain the high and evolving luminosity early on in the outburst..**

742 4.2 Neutron star accretion

743 Alternatively, a remnant magnetar may be accreting fall-back matter from its birthing supernova
 744 explosion, and the observed engine activity is either accretion or spin-down powered. The rate
 745 of mass fall-back can be written (e.g., (54))

$$\dot{M}(t) = \frac{2}{3} \frac{M_{\text{acc}}}{t_{\text{acc}}} \frac{1}{(1 + t/t_{\text{acc}})^{5/3}}, \quad (\text{S9})$$

746 where M_{acc} is the total quantity of returning mass and $t_{\text{acc}} \sim t_{\text{ff}} \sim (G\bar{\rho})^{-1/2}$ is the characteristic
 747 fall-back time which depends on the mean density $\bar{\rho}$ of the layer of progenitor star contributing
 748 to M_{acc} . For an extended star with hydrogen-rich ejecta like a blue supergiant ($\bar{\rho} \sim 10^{-5} - 10^{-3}$
 749 g cm^{-3}), we have $t_{\text{acc}} \sim 10^5 - 10^6$ s, compatible with the timescale of engine activity for
 750 AT2018cow (5). A neutron star of initial mass $M_{\text{ns}} \approx 1.4M_{\odot}$ can accrete at most $M_{\text{acc}} \approx$
 751 $0.8M_{\odot}$ before collapsing into a black hole and thus indicates a maximum accretion rate in the
 752 range $\lesssim 10^{-6} - 10^{-5}M_{\odot} \text{ s}^{-1}$, i.e., 9-10 orders of magnitude above the Eddington accretion
 753 rate for a solar-mass compact object. By comparison, to explain the peak engine luminosity of
 754 AT2018cow ($\sim 10^{45} \text{ erg s}^{-1}$ or 7 orders of magnitude above the Eddington luminosity) through
 755 accretion would require either a lower peak accretion rate $\dot{M} \sim 10^{-8}M_{\odot} \text{ s}^{-1}$ or inefficient
 756 production of X-rays by the accretion flow. On timescales of several weeks, relevant to the
 757 epoch of the observed QPO, the accretion rate is ~ 2 orders of magnitude lower than at peak,
 758 i.e. in the characteristic range

$$\dot{M}(t_{\text{QPO}}) \sim 10^{-10} - 10^{-8}M_{\odot}\text{s}^{-1} \quad (\text{S10})$$

759 The Alfvén radius of the accretion flow, at which the ram pressure of the incoming flow is
 760 balance by magnetic forces, is given by (e.g., (54))

$$R_A \approx 40B_{12}^{4/7} \dot{M}_{-9}^{-2/7} M_{1.4}^{-1/7} \text{ km}, \quad (\text{S11})$$

761 where $\dot{M}_{-9} = \dot{M}/(10^{-9} M_{\odot} \text{ s}^{-1})$ and now we have normalized the surface magnetic field $B_{12} =$
 762 $B/10^{12} \text{ G}$ to a lower value more akin to a radio pulsar than a magnetar. If the magnetic field is
 763 sufficiently large that R_A exceeds the neutron star radius $\approx 12 \text{ km}$, i.e. if

$$B_{12} \gtrsim 0.1 \dot{M}_{-9}^{1/2} M_{1.4}^{1/4}, \quad (\text{S12})$$

764 then the accretion flow will be directed from the disk onto the magnetic axis of the neutron star,
 765 providing a possible mechanism to induce periodicity in the signal on the rotation period.

766 In order for accretion to occur, a neutron star must rotate slow enough that it is not in an
 767 ejector phase (55–57), and this occurs approximately when the Alfvén radius R_A is smaller than

768 the light cylinder radius $R_{lc} \equiv c/2\pi\nu$. This then implies

$$B_{12} < 20 \dot{M}_{-9}^{1/2} M_{1.4}^{1/4} \left(\frac{\nu}{224 \text{ Hz}} \right)^{-7/4}. \quad (\text{S13})$$

769 Accretion also affects the spin-down rate of the neutron star, driving the spin-period to an
770 equilibrium value given by (54, 56, 58, 59)^l

$$P_{eq} \approx 4 B_{12}^{6/7} \dot{M}_{-9}^{-3/7} M_{1.4}^{-5/7} \text{ ms} \quad (\text{S14})$$

771 Explaining the observed QPO ($P_{eq} \approx 1 - 2P_{\text{QPO}} \approx 4.4 - 8.8 \text{ ms}$) thus requires an accretion
772 rate of

$$\dot{M}(t_{\text{QPO}}) \approx (2 - 9) \times 10^{-10} B_{12}^2 M_{1.4}^{-5/3} M_{\odot} \text{ s}^{-1}, \quad (\text{S15})$$

773 consistent with our estimate in eq. S10. However the timescale to reach this equilibrium
774 (Ref. (54), their eq. 21; see also (56–58, 61)),

$$\tau_{eq} \approx 400 \text{ d } B_{12}^{-8/7} \dot{M}_{-9}^{-3/7} M_{1.4}^{16/7} \underset{\dot{M}=\dot{M}_{\text{QPO}}}{\approx} (400 - 900) B_{12}^{-2} M_{1.4}^{16/7} \text{ d} \quad (\text{S16})$$

775 can be long. This indicates that $P \approx P_{eq}$ will only be achieved on timescales of the observed
776 QPO ($\tau_{eq} \ll 25 \text{ d}$) if B (or, equivalently, $\dot{M} \propto B^2$) is sufficiently high, $B_{12} \gtrsim 3$. In such a case
777 that $\tau_{eq} \gg t_{\text{QPO}}$, then the spin period would reflect that of the neutron star at birth rather than
778 P_{eq} , the equilibrium value achieved through accretion.

779 **However, a direct connection between the above accretion scenario and the observed**
780 **behavior of AT2018cow is ruled out, for reasons that are analogous to those which rule out**
781 **an isolated magnetar. In particular, the time-dependence of luminosity and spin period**
782 **predicted by a mass accretion rate such as equation (S9) lead to constant luminosity and**
783 **spin period at times $t \ll t_{acc}$ and evolving luminosity and spin when $t \gg t_{acc}$. When**
784 **applied to AT2018cow, the observed declines of its X-ray and bolometric luminosities (5)**
785 **would imply a corresponding change in spin period. But such a change contradicts the**
786 **constant frequency of the QPO.**

787 5 Pulsation search assuming a binary

788 To search for possible orbital periodicities, we used the open source PRESTO software** to
789 perform an acceleration search over the frequency-frequency derivative plane. The acceleration
790 search scheme assumes that the compact object’s acceleration is roughly constant throughout

^lUnlike in some past work, we assume that this equilibrium is determined by the balance of accretion spin-up and spin-down from the magnetized wind (the latter enhanced as a result of the larger magnetosphere opened by the fall-back (60)).

**<https://github.com/scottransom/presto>

791 the observation of duration $T \lesssim P_{\text{orb}}/10$ (62). We ran the search assuming that any possible sig-
 792 nal would drift across a maximum of 100 Fourier frequency bins (z_{max} of 100). Informed by the
 793 centroid frequency and width of the QPO (assumed to be the fundamental frequency) reported
 794 above, we narrowed the search frequency window to be over 200-260 Hz^{††}. The acceleration
 795 search yielded no candidates above 3 sigma (single trial probability). Subsequently, we ac-
 796 counted for the possibility of linearly changing accelerations, and carried out a jerk search (63),
 797 with PRESTO^{‡‡}. This opens the way to detect other more exotic systems like very compact,
 798 relativistic binary systems, and allows searches over longer observations, unlike in acceleration
 799 searches. The jerk search would also allow us to recover any lost signal from residual Doppler
 800 smearing in the previous acceleration searches (64). In the end, the jerk search also yielded no
 801 candidates above 3 sigma (single trial probability).

802 As described in section 4, the spin of the potential neutron star will evolve in a manner
 803 that depends strongly on the actual underlying physical scenario. Exploring all these models is
 804 beyond the scope of this work. But we provide the barycenter corrected events as supplementary
 805 files so that any reader with access to a computer cluster may use it. A sample Python code to
 806 load all the events is also provided (load_events.py).

807 **6 A rough estimate of number of FBOT QPOs detectable** 808 **with *NICER***

809 **The signal-to-noise of a QPO (n_σ , single trial) in a power spectrum depends on the mean**
 810 **source count rate (S), background rate (B), fractional rms of the QPO (rms), the total**
 811 **exposure time (T) and the width of the QPO (W). These quantities are related as follows**
 812 **(51):**

$$n_\sigma = \frac{1}{2} \frac{S^2}{S + B} \sqrt{\frac{T}{W}}$$

813 **Using a deep exposure of 250 ks, a conservative mean background rate of 0.5 cps, and an**
 814 **rms (30%) and width (<16 Hz) similar to AT2018cow’s 224 Hz QPO, we can use the above**
 815 **equation to estimate the minimum mean source count rate of a future FBOT to detect a**
 816 **QPO at 5σ (single trial). This value is roughly 1.25 cps which is a factor of 5 lower than**
 817 **the peak 0.25-2.5 keV count rate. This translates to the source being roughly a factor of**
 818 **2 farther in distance than AT2018cow, i.e., about 100 Mpc. Using the volumetric rate**
 819 **of AT2018cow-like objects, i.e., <0.1% of core-collapse supernovae = 0.001×10^{-4} events**
 820 **$\text{yr}^{-1} \text{Mpc}^{-3}$ (10, 38, 39) we estimate a rate of ~ 0.3 events per year within 100 Mpc. In**
 821 **other words, *NICER* could detect QPOs from AT2018cow-like if they are within 100 Mpc**
 822 **($z \lesssim 0.025$) which happen once every few years. This estimate would improve slightly if**
 823 ***NICER* observations are strategically planned during the ISS orbit night when the overall**

^{††}in PRESTO parlance, this is *flo* of 200, and *fhi* of 260

^{‡‡}In PRESTO parlance, this is *wmax* of 300

824 **background is lower. Other factors like large angular distance between the target and**
825 **the sun, bright earth, etc, would also reduce the background but those would ultimately**
826 **depend on the location of the target on the sky.**

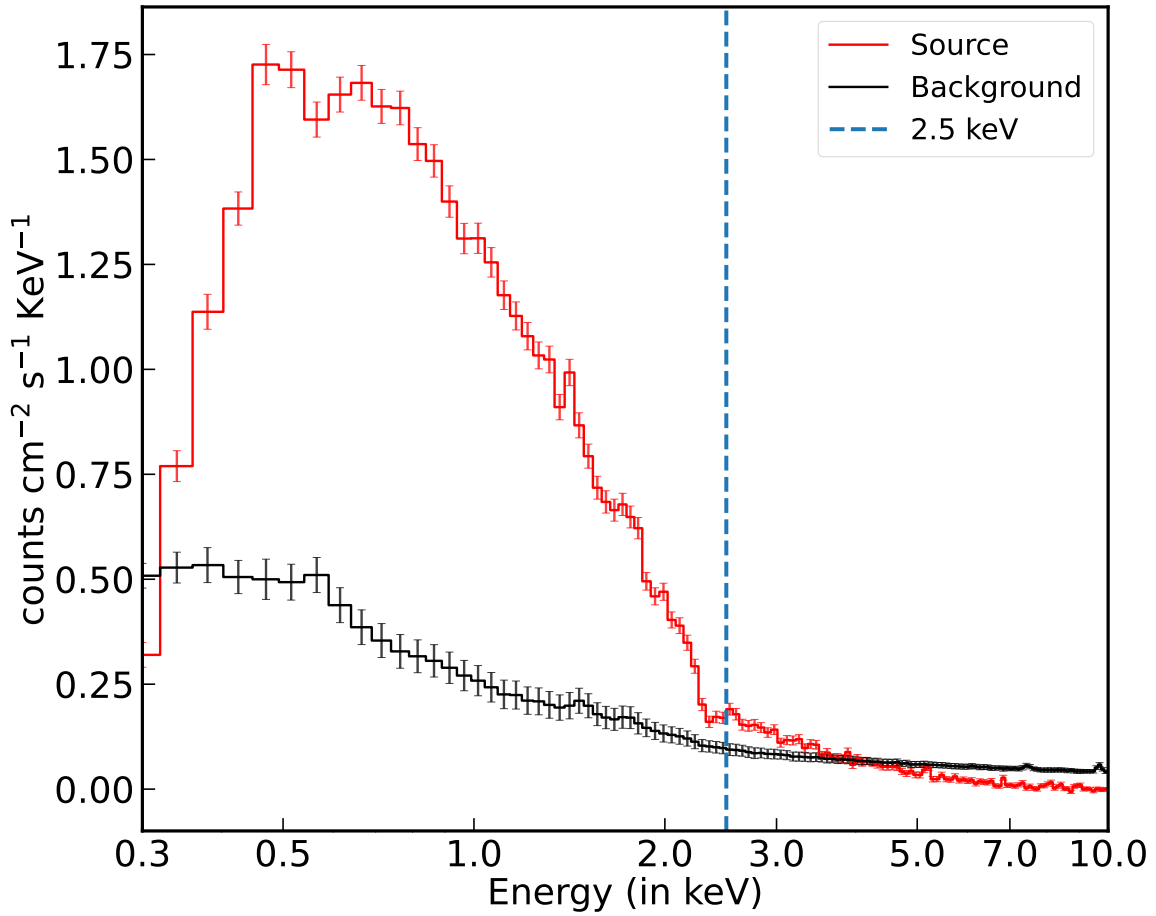


Figure S1: **Average energy spectra of AT2018cow (red) and the background (black).** Beyond 2.5 keV the ratio of source to background counts (signal-to-noise) drops below 2. Because the sensitivity towards detecting a QPO depends on $\text{source}^2/(\text{source}+\text{background})$ (51), we chose to omit events above 2.5 keV.

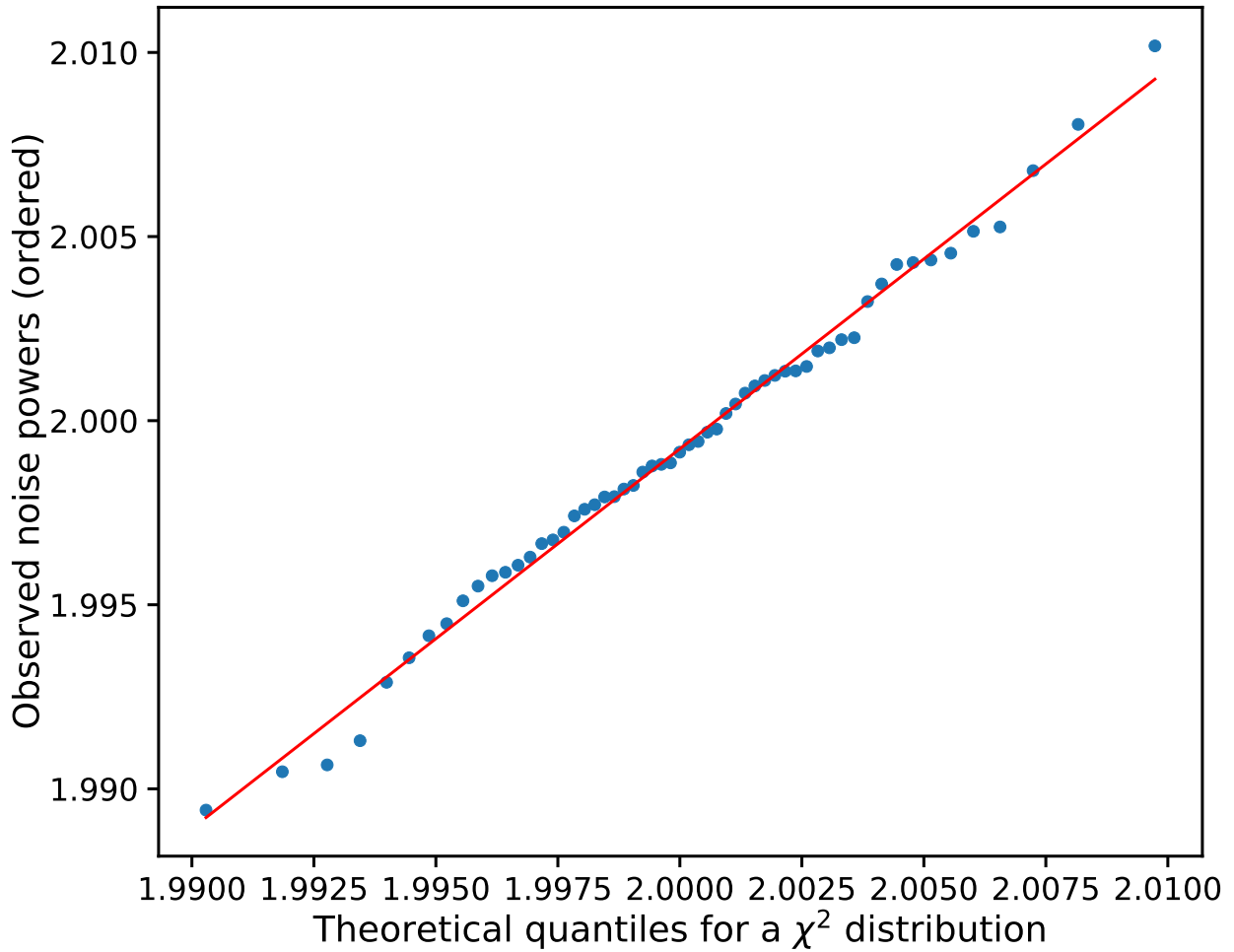


Figure S2: **Probability plot to visually assess whether the power values in the PDS continuum are χ^2 distributed.** This is a *qualitative* assessment tool that tells us that if the data points lie on a straight line, as they do, they appear consistent with the theorized model, which in the present case is a χ^2 distribution with $2 \times 105 \times 2048$ degrees of freedom (see section 2.2.1 for more details).

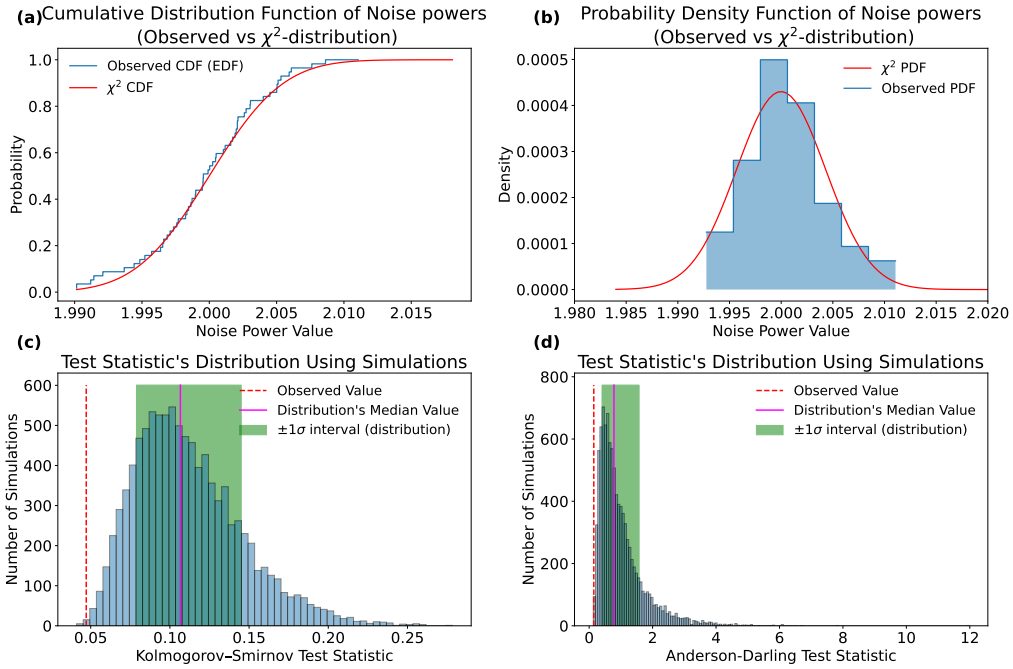


Figure S3: **White noise tests for soft X-ray PDS of AT2018cow.** *Top-left:* Comparing the empirical distribution function (EDF) of the values in the PDS continuum (blue histogram) with the cumulative distribution function of a χ^2 distribution with $2 \times 105 \times 2048$ degrees of freedom. *Top-right:* Comparison of the observed probability distribution function (PDF) with the expected PDF of a χ^2 distribution with $2 \times 105 \times 2048$ dof. Both the observed PDF and EDF track expected curves quite well. *Bottom-left:* The distribution of the K-S statistic derived from EDFs sampled from a χ^2 distribution with $2 \times 105 \times 2048$ dof. *Bottom-right:* Same as *bottom-left* but using an Anderson-Darling test statistic. Both the test statistic values are consistent with a χ^2 distribution and suggest that the PDS continuum is white (see section 2.2.2 for more details).

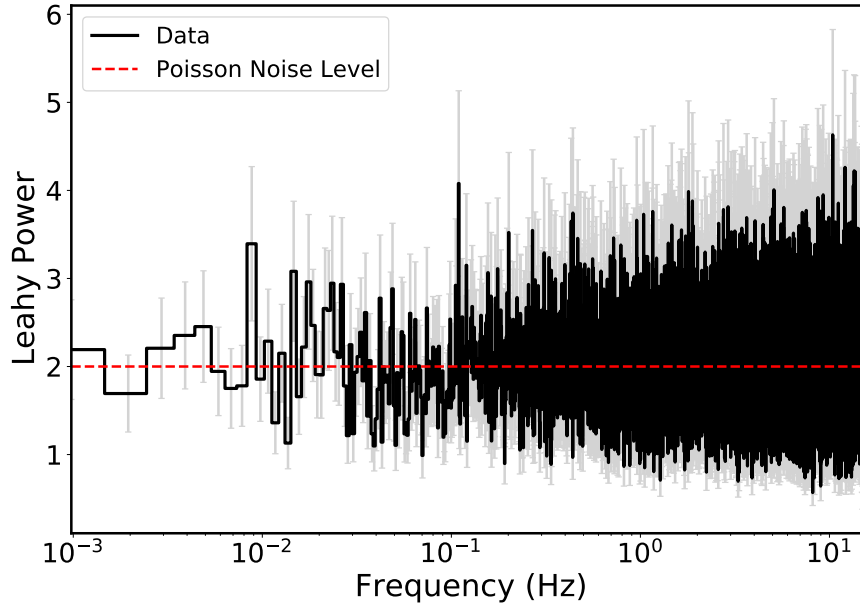


Figure S4: *XMM-Newton/EPIC-pn* soft X-ray (0.25-2.5 keV) PDS of AT2018cow to assess noise continuum at low frequencies. The PDS was derived by averaging 15 1024 s light curve segments sampled at 1/16 Hz. The frequency resolution is 1/2048 Hz. It is evident that even at frequencies as low as 1/2048 Hz there is no evidence for red noise. The 224 Hz QPO in *NICER* data is outside of this band pass, i.e., beyond EPIC-pn's Nyquist frequency.

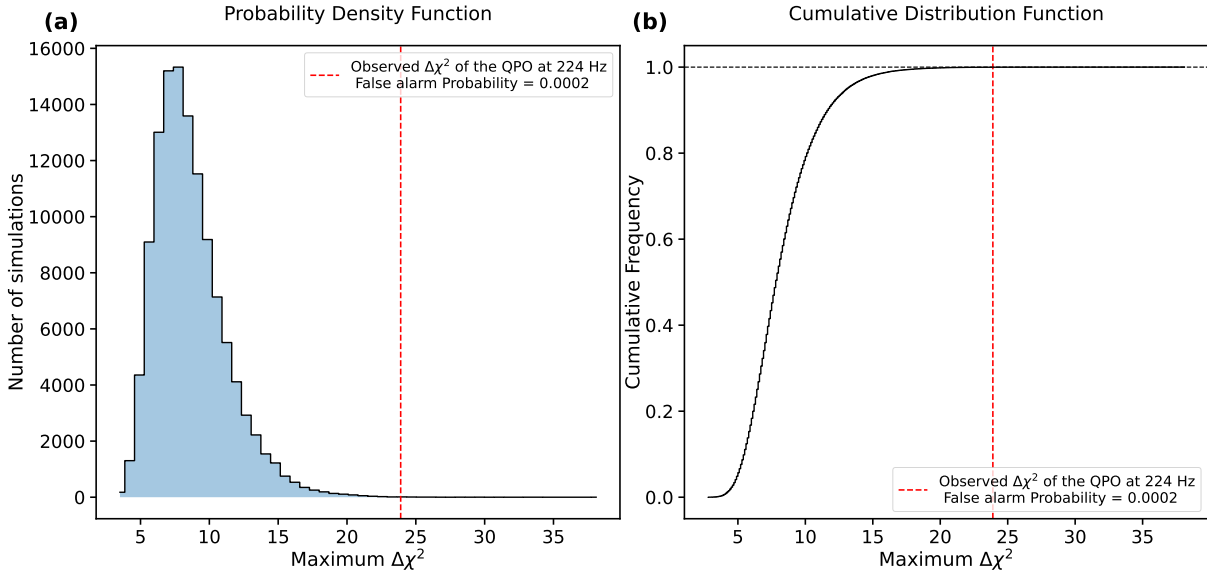


Figure S5: The probability density function (PDF) (left) and the cumulative distribution function (CDF) (right) of the 10^5 simulated maximum $\Delta\chi^2$ values. The vertical dashed red line marks the value of the $\Delta\chi^2$ of the observed 224 Hz QPO. The false alarm probability (1-CDF) vs $\Delta\chi^2$ is shown in the right panel of Fig. 1. The false alarm probability of seeing a spurious signal as strong as the one seen in data at 224 Hz is 0.0002.

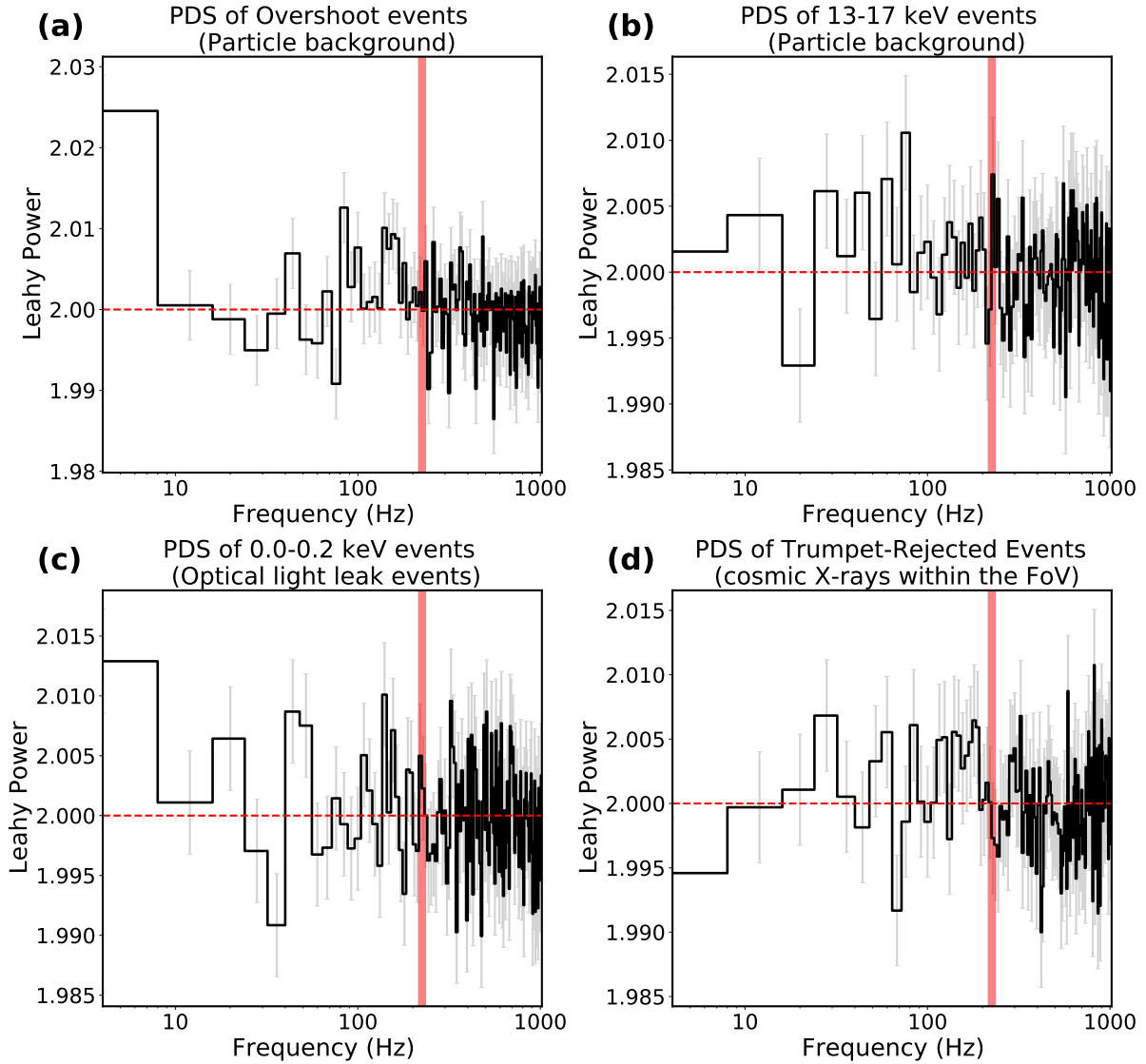


Figure S6: *NICER* PDS of various types of noise. (a) and (b) show the PDS of the overshoots and the 13-15 keV events, respectively. They both track the particle background. (c) The average PDS of 0.0-0.2 keV events. These are the optical light leak events. (d) The average PDS derived from trumpet-rejected events. These are the off-axis events that track the cosmic X-ray and other sources in the FoV. In all cases, the frequency resolution, the number of spectra averaged and the frequency rebinning is same as the left panel of Fig. 1. The red shaded rectangle shows the location of the 224 Hz QPO. Clearly, there is no statistically significant evidence for a 224 Hz QPO in any of these noise power spectra. The dashed horizontal line indicates the expected Poisson noise level of 2. These plots suggest that the 224 Hz QPO in Fig. 1 does not originate from any of these background events.

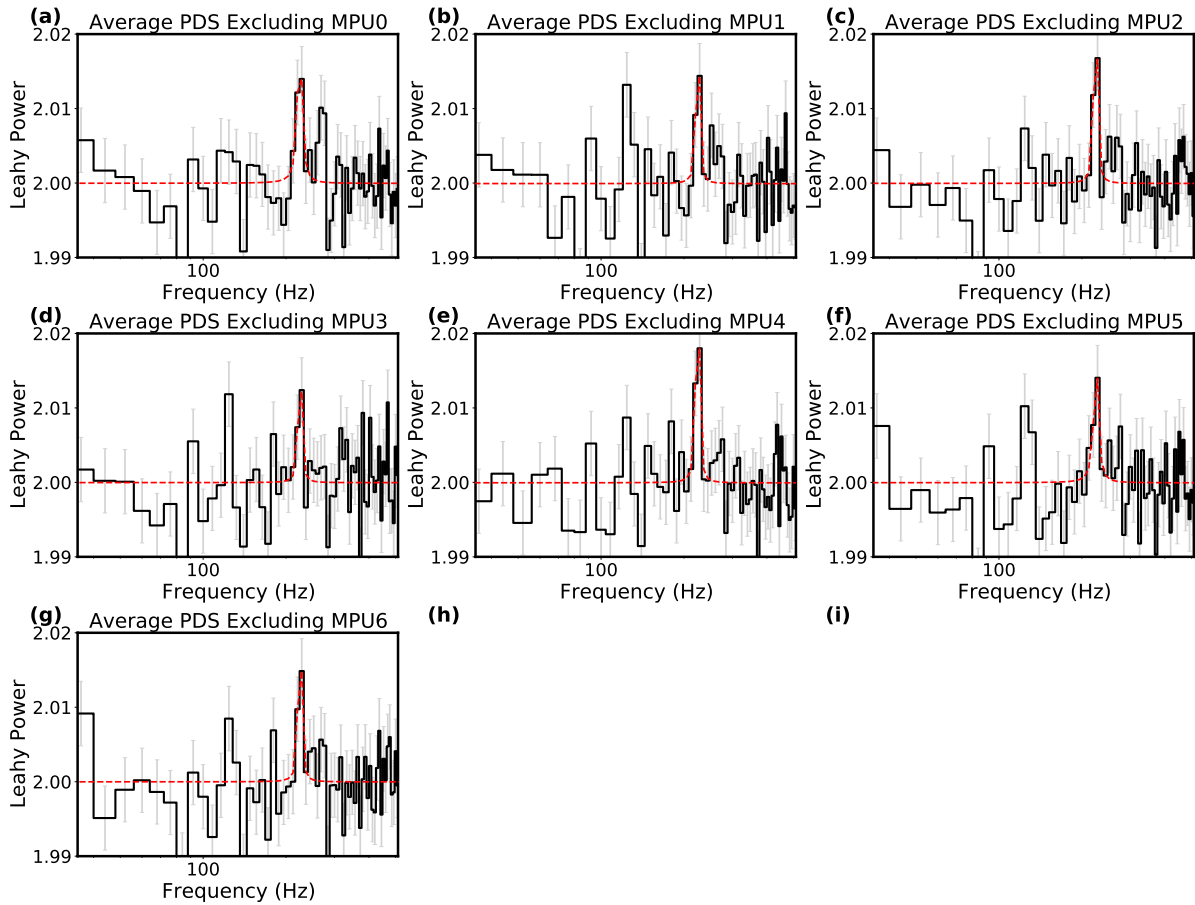


Figure S7: *NICER* power spectra with one MPU removed at a time. The QPO properties, i.e., fractional rms strength, centroid and width are all same (within errorbars) across all the above PDS. This demonstrates that the QPO signal is uniformly distributed across all the MPUs and points towards an non-instrumental origin.

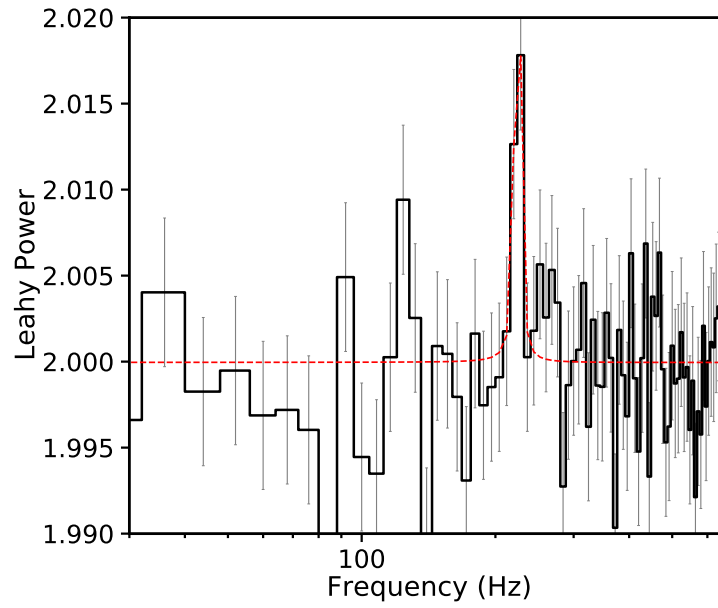


Figure S8: **Same power spectra as the left panel of Fig. 1 but with plausible GPS noise events removed.** This PDS is indistinguishable from Fig. 1 and demonstrates that the GPS noise, if any, is not the origin of the 224 Hz QPO (see section 2.3.5 for more details)

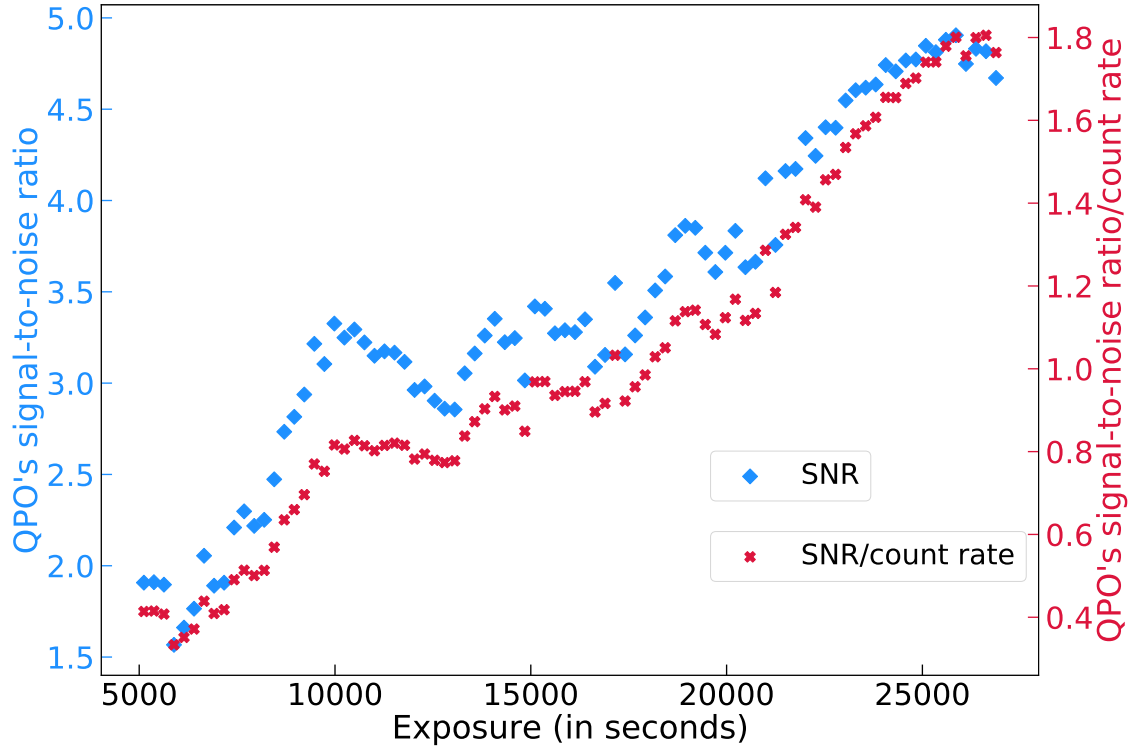


Figure S9: **QPO's signal-to-noise ratio (blue diamonds) and signal-to-noise over average count rate (red crosses) vs accumulated exposure time.** It is evident that the QPO's signal-to-noise gradually increases with increasing exposure. This suggests that the signal is persistent throughout the *NICER* monitoring period and it does not originate from any single exposure. The steepening of the mean slope around 20000 s corresponds to day 17. Note that the data points are not independent (see sec. 2.4 for more details). See also supplement movie S1. Data available in supplementary files.

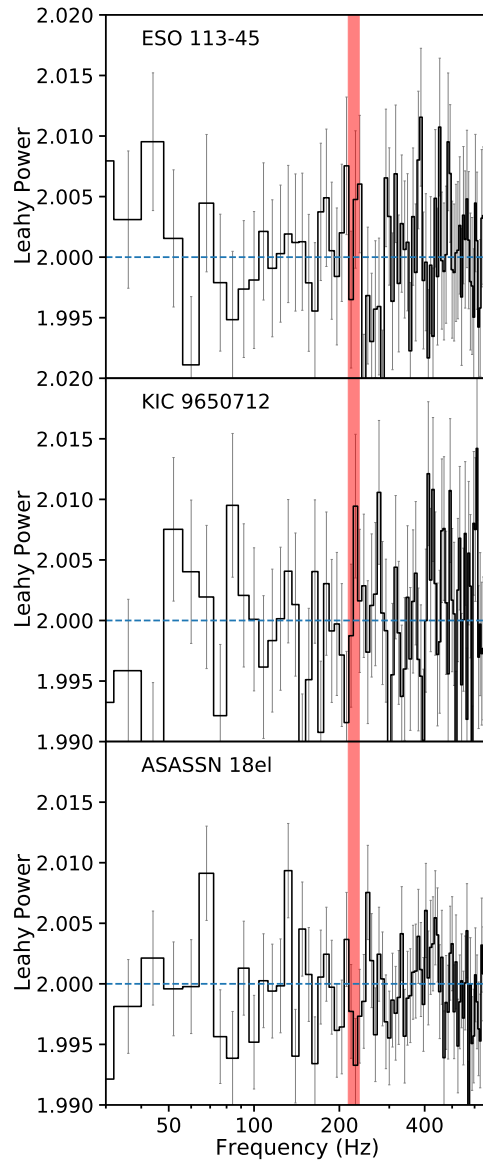


Figure S10: **Average PDS of 3 AGN monitored by *NICER* during the same 2 month period as AT2018cow.** The AGN names are shown on each panel. The mean count rates (exposures) (from top to bottom) are 30.5 (15.6 ks), 3.9 (14.3 ks) and 1.2 (33.3 ks) counts/s, respectively. These PDS were extracted exactly the same way as the average PDS of AT2018cow in Fig. 1. The location of AT2018cow’s QPO is indicated by the red shaded area. There is no evidence for a 224 Hz QPO in any of these power spectra. This provides further support that the 224 Hz QPO in Fig. 1 is intrinsic to AT2018cow’s data.

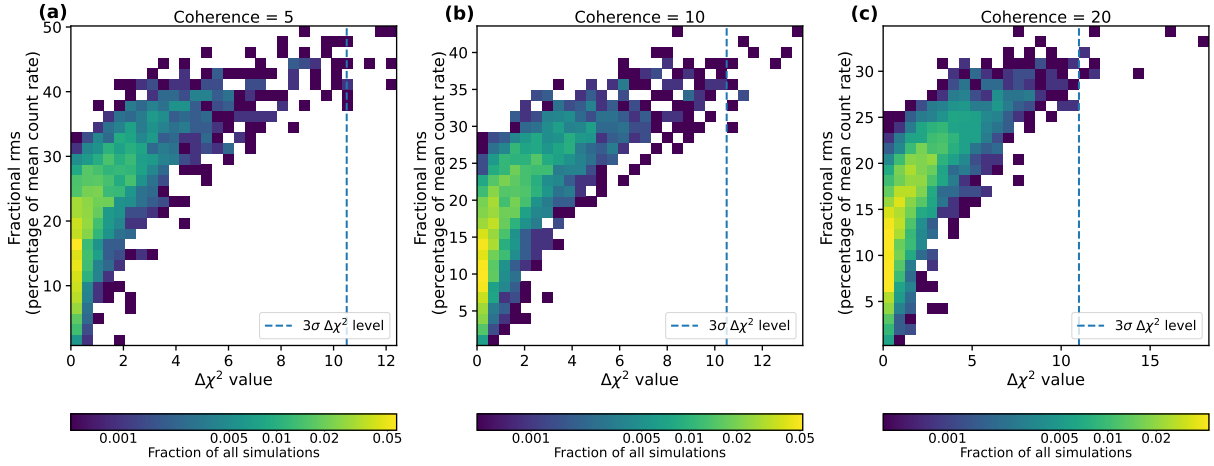


Figure S11: **2-D histograms of $\Delta\chi^2$ improvement (constant vs constant + Lorentzian) vs corresponding fractional rms of a QPO-like feature at half the observed frequency, i.e., between 104-120 Hz.** These were derived using simulations (See sec. 3 for more details). The dashed vertical line in each panel corresponds to the 3σ (99.73%) level. The upper limit on fractional rms corresponds to the intersection of the histogram with the 3σ vertical line (see Table. S2). The three panels correspond to three different coherence values (centroid frequency/width) of a QPO-like feature between 104 and 120 Hz.

827 **Movie S1:** The top panel of the movie shows the evolution of the average PDS and the gradual
828 improvement in the QPO signal at 224 Hz with accumulated exposure. The lower panel shows
829 the corresponding long-term light curve. The shaded red rectangle in the top panel shows the
830 location of the 224 Hz QPO. This suggests that the QPO is long-lived and present in majority
831 of the observations. This is available as *Movie_S1.gif*.

Table S2: Upper limits on the fractional rms value of QPOs at various integer harmonics of 224 Hz (see Fig. S11).

Frequency range	rms upper limit (coherence=5)	rms upper limit (coherence=10)	rms upper limit (coherence=20)
$\frac{1}{2} \times (224 \pm 16)$ Hz	30	25	23
$\frac{3}{2} \times (224 \pm 16)$ Hz	41	32	27
$2 \times (224 \pm 16)$ Hz	42	36	30